

The Carter–Jenkins Center

presents



Michael Poff, MSW, MA

*Psychoanalyst - The Carter-Jenkins Center Psychoanalytic Institute
M.A., Anthropology, The University of Chicago*



The Carter-Jenkins Center for Psychoanalytic Studies

Grand Rounds
Lecture Series:

The Role of Anthropology in Psychoanalysis



Michael Poff, MSW, MA

Psychoanalyst - The Carter-Jenkins Center Psychoanalytic Institute
M.A., Anthropology, The University of Chicago

Freud's Anthropological Theory

Part II



Image: Freud's Office, Berggasse 19, Vienna. From 1938, days before the Freud family left for London.

Freud and 19th Century Cultural Evolutionism

Herbert Spencer (1820-1903)

- *Progress: Its Law and Cause* (1857)
- first applied Darwin's theory to culture
- gods are displacements from the father
- grand process theory of world evolution



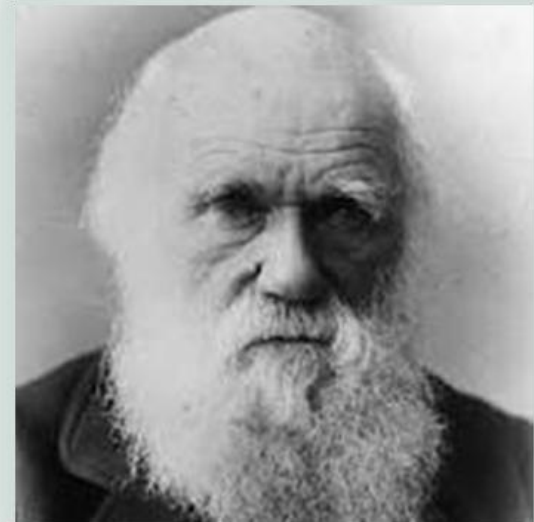
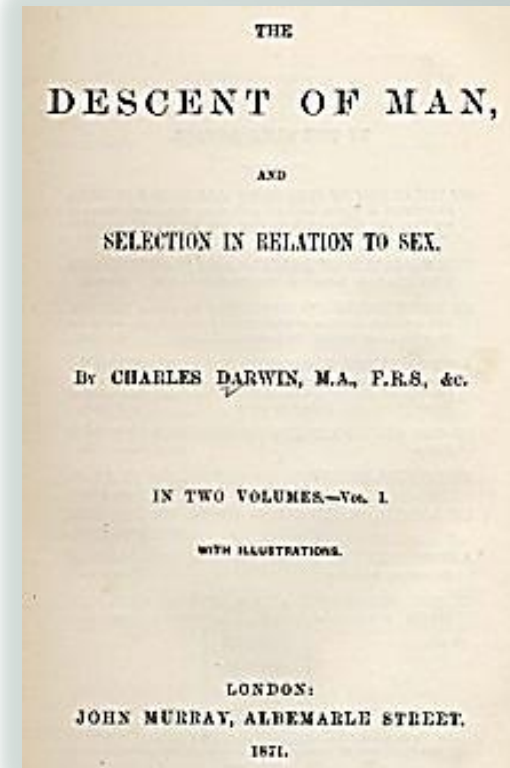
Freud and 19th Century Cultural Evolutionism

Charles Darwin (1809-1882)

On the Origin of Species (1859)

The Descent of Man (1871)

- sexual dimension to religion
- incest taboo implies underlying wish
- the *primal horde*
- emotional expressions: 'survivals'
- applied biological evolution to culture/society



Freud's Estimation of Totem and Taboo (1913)

“... a first attempt on my part at applying the point of view and the findings of psycho-analysis to some unsolved problems of social psychology.”

Freud, Preface to Totem and Taboo



Images: (L to R): #1 Camel, Chinese Early Tang style (618-907); #2 Baboon of Thoth, Roman Period (30 B.C.-A.D. 395); #3 Guardian Figure, Chinese Bronze (15th-17th century); #4 Roman bronze Venus, Egyptian marble (1st or 2nd century A.D.)

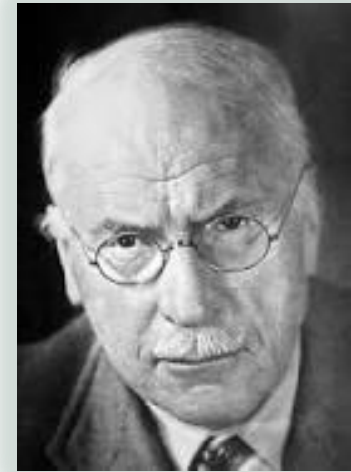
Totem and Taboo (1913)

Carl Jung (1875–1961)

Wilhelm Wundt (1832-1920)

“I readily confess that it was from these two sources that I received the first stimulus for my own essays.”

Freud, Totem and Taboo



Carl Jung

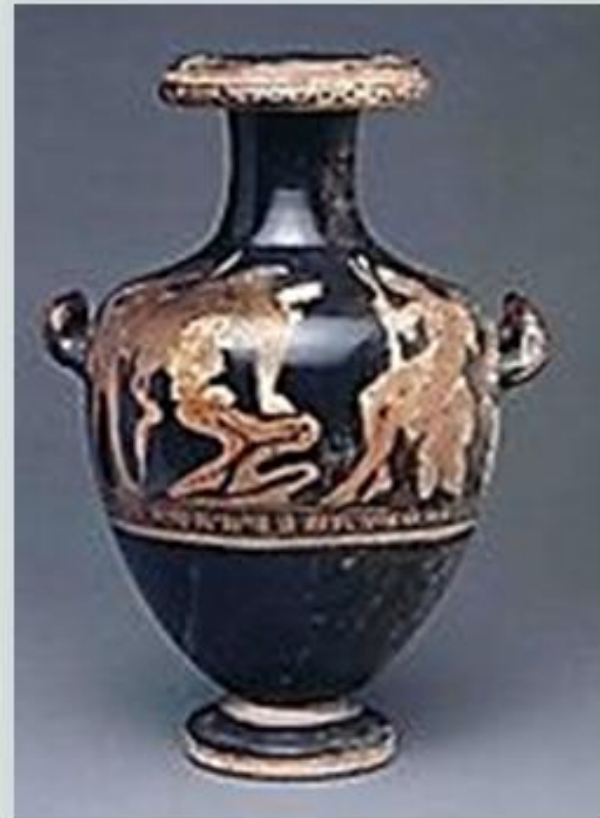


Wilhelm Wundt

Totem and Taboo and the Oedipus Complex

*“The most daring enterprise
I have ever ventured.”*

- psychoanalytic reconstruction
- primal trauma
- origins of culture, civilization
- parricide in the primal horde
- Oedipus complex: the ‘nuclear complex of the neuroses



Totem and Taboo (1913)

Chapter I

The Horror of Incest

- Primitive Incest Taboos and the Neuroses
- Totemism: functions to prevention of incest
- Two primal taboos:
 1. killing the totem
 2. sex within the clan

Image: *Athenian Hydria, (380-360 B.C.)
Oedipus facing the Sphinx.*



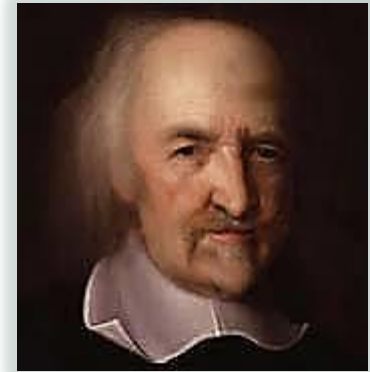
The Social Contract

- **Thomas Hobbes (1588–1679)**
- **John Lock (1632-1704)**
- **J-Jacques Rousseau (1712-1778)**

The Enlightenment
'Social Contract' Theory
The 'state of nature'

*“The new organization would have collapsed
in a struggle of all against all...”*

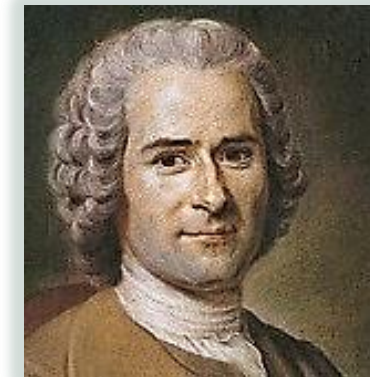
Freud, Totem and Taboo



Hobbes



Locke



Rousseau

The Social Contract

- **David Hume (1711-1776)**

Emphasized unconscious mechanisms
example: Projection



Hume

- **Ludwig Feuerbach (1804–1872)**

“Religion is the dream of waking consciousness...”



Feuerbach

- **Frederich Nietzsche (1844-1900)**

‘...some primeval relic of humanity is at work...’



Nietzsche

Totem and Taboo (1913)

Chapter II

“Taboo and Emotional Ambivalence”

- Taboo prohibitions – ‘untouchable’
- Mysterious, dangerous, sacred/unclean
- Transmissibility of taboo
- Resemblance between taboo and neuroses

Image: Egyptian Imhotep, bronze (716-332 B.C.). Deified statesman from the 3rd Dynasty (2705-2640 B.C.). Freud refers to Asklepios in context of the healing power of dreams.



Anthropology and 19th Century Cultural Evolutionism

- **Edward B. Tylor (1832-1917)**

- *Primitive Culture (1871)*
- 'Father' of Social Anthropology
- theory of Animism
- defined *cultural evolutionism* for Anthropology



Tylor

- **James Frazer (1854-1941)**

- *The Golden Bough (1890)*
- *Totemism and Exogamy (1910)*



Frazer

“The law only forbids men to do what their instincts incline them to do...”

Totem and Taboo (1913)

Chapter III

“Animism, Magic and the Omnipotence of Thoughts”

- Animism/Neurosis: the omnipotence of thought
- Projection of emotional impulses
- Animistic “Philosophy of Nature”
- Domination of the association of ideas
- Evolutionary Correlations
- Psychic Reality Vs. Historical Reality



Image: Shabti Figure of Djehutyemheb, Egyptian (1323-1190 B.C.) limestone and painted wood head

Totem and Taboo (1913)

Freud's Evolutionary Scheme

Philosophy of Nature: Evolutionary Phases	Magic/Animism Phase	Religious Phase	Scientific Phase
Libidinal Phase: (narcissistic cathexis)	Narcissism (self)	Child Object-Choice (Parents)	Mature Object-Choice (Reality Principle) (External World)
Locus of Omnipotence:	Self/Spirits	Self/The gods	'Necessity' Power of the Human Mind Natural Laws

Appendix

Current views on the possible validity of some aspects of Lamarckian theory



Image: Postcard, Athenian Acropolis. Freud's first/last Greece visit in 1904. To wife Martha, of experience climbing Acropolis with brother Alexander. Recalled in A Disturbance of Memory on the Acropolis, (1936)

The Role of Anthropology in Psychoanalysis

Freud's Anthropological Theory

Part II



a production of

The Carter-Jenkins Center



The End

Copyright 2013

