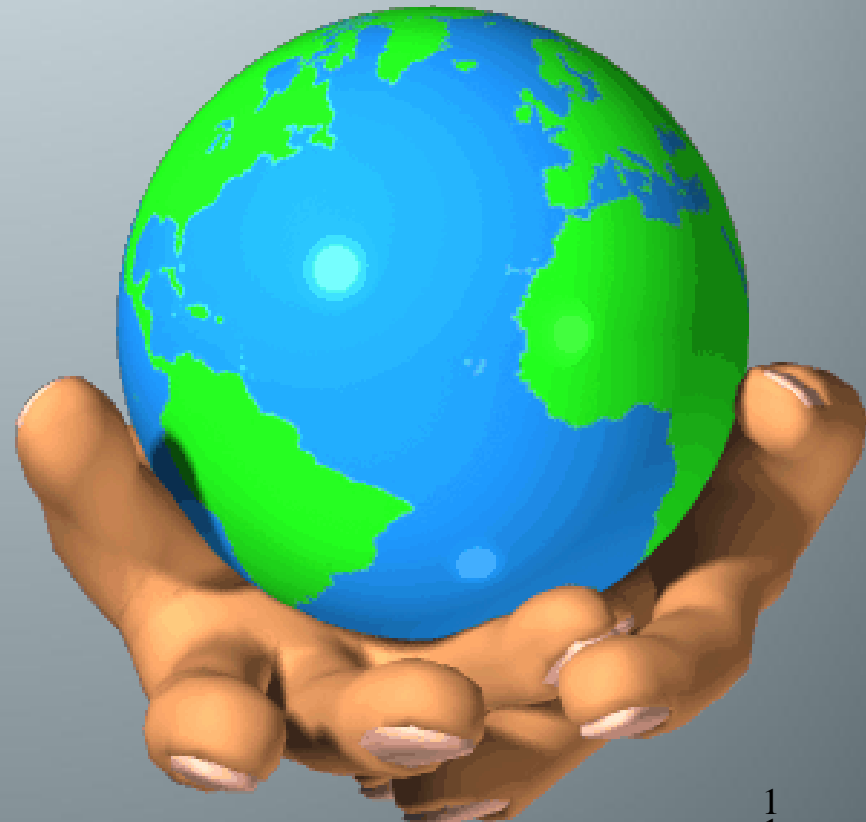


The Carter-Jenkins Center

presents



Daniel Benveniste, Ph.D.

Autism,
The Symbolism of the Mouth
and a New Approach to
‘Totem and Taboo’

Daniel Benveniste, Ph.D.





DR. SIGMUND
FREUD

TOTEM
and
TABOO

Translated
by
A. A. BRILL



- Obsessional neurosis and Hysteria
- Phallic Stage
- Totemism and Myth of Oedipus
- Ritual of the Totemic Feast
- Fraternal Clan

Incestuous desire for the mother.

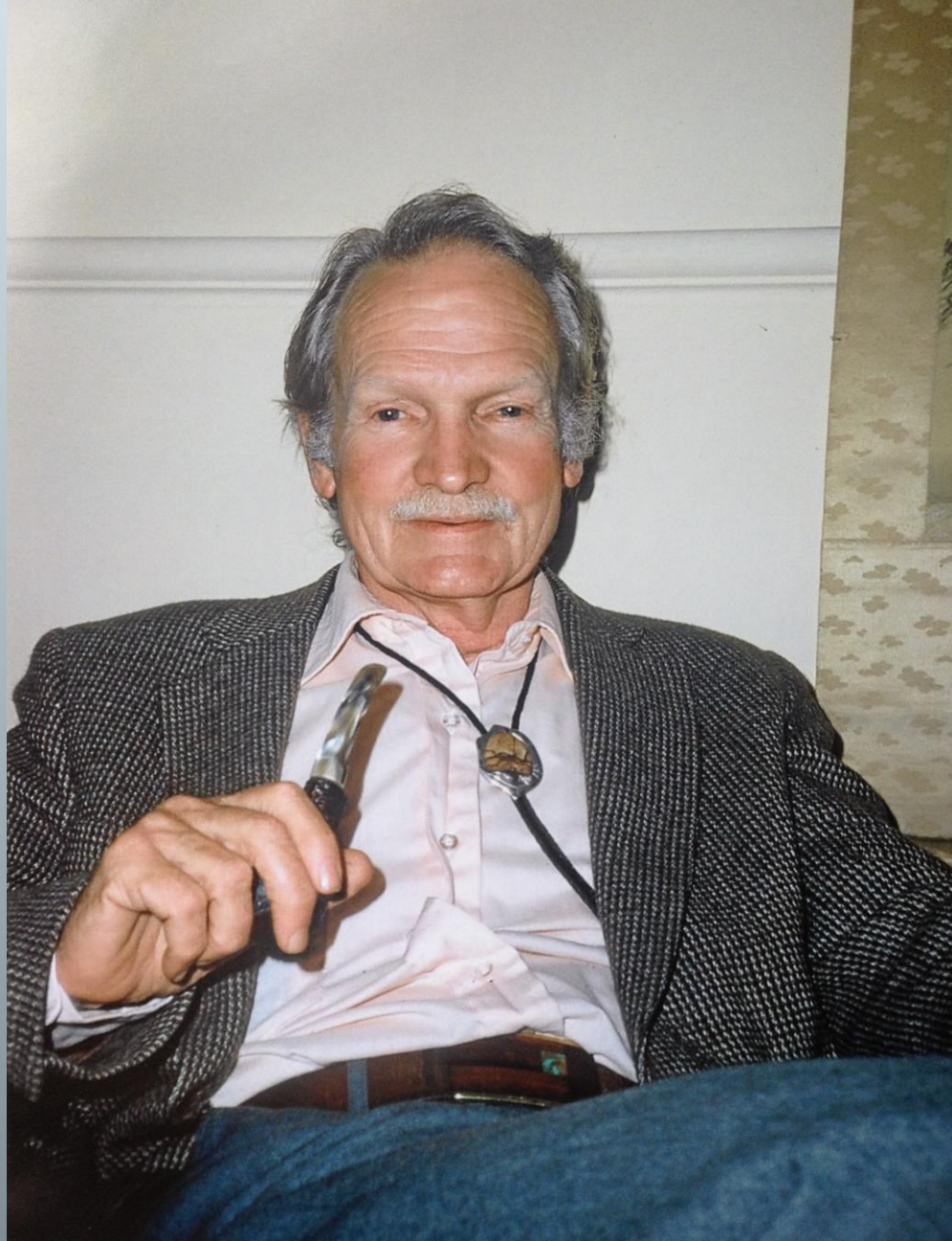
Horror of incest.

Murderous impulses toward the father.

**Remorse and mourning of the murdered
father.**







John Weir Perry

Ten Recurring Images and Themes in the Myth of Sacral Kingship, the Ancient New Year Festival and the Brief Psychotic Disorder

- **Center**
- **Death**
- **Return to Beginnings**
- **Cosmic Conflict**
- **Threat of the Opposite Sex**
- **Apotheosis**
- **Sacred Marriage**
- **New Birth**
- **New Society**
- **A Vision of a Quadrated World**

Sigmund Freud

1. Obsessional neurosis
Hysteria
2. The Phallic stage
3. Totemism – Myth of
the hero
4. Sacrificial totemic feast
5. Fraternal clan

John Weir Perry

- Brief psychotic
disorder
- Adolescence
- Myth of Sacral
Kingship
- Ancient New Year
Festival
- Urban Revolution

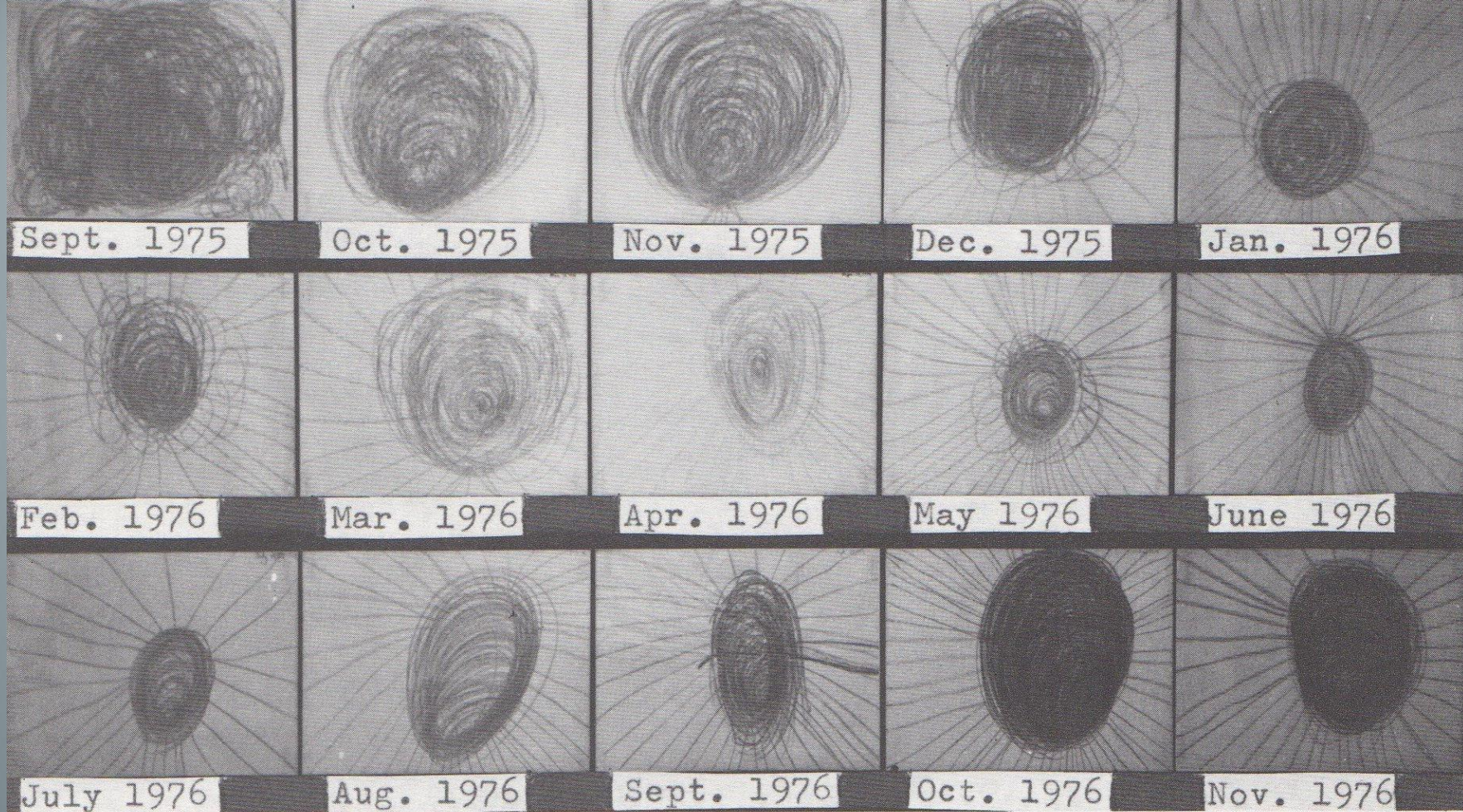
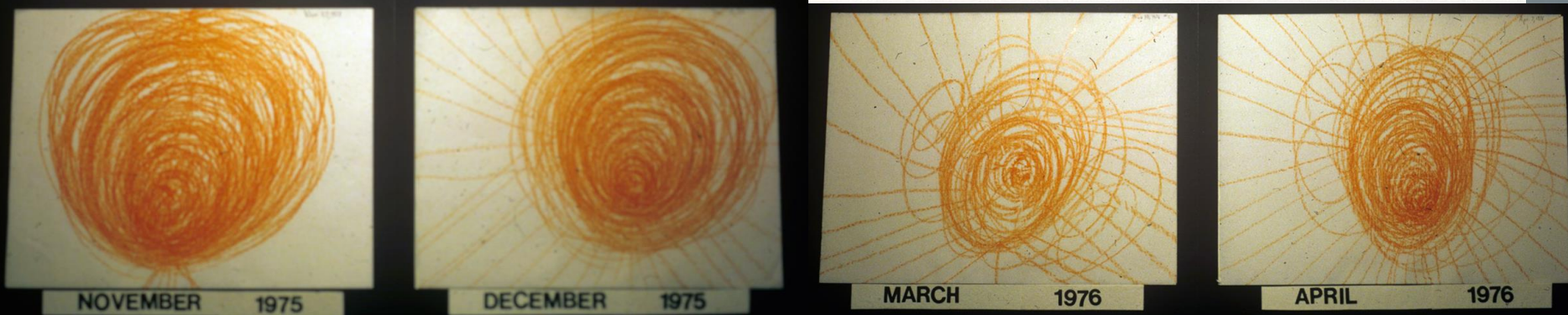


Fig. 1



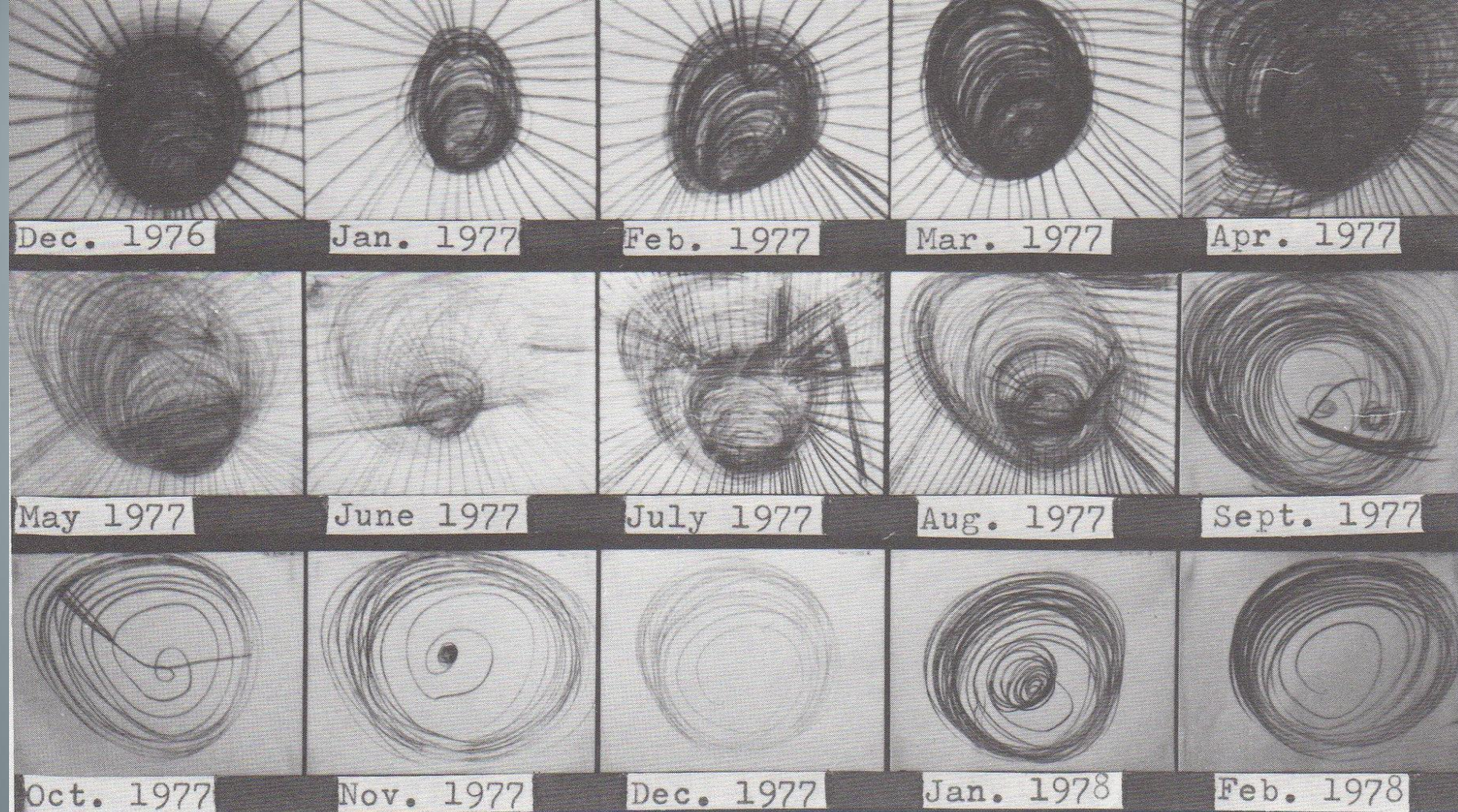
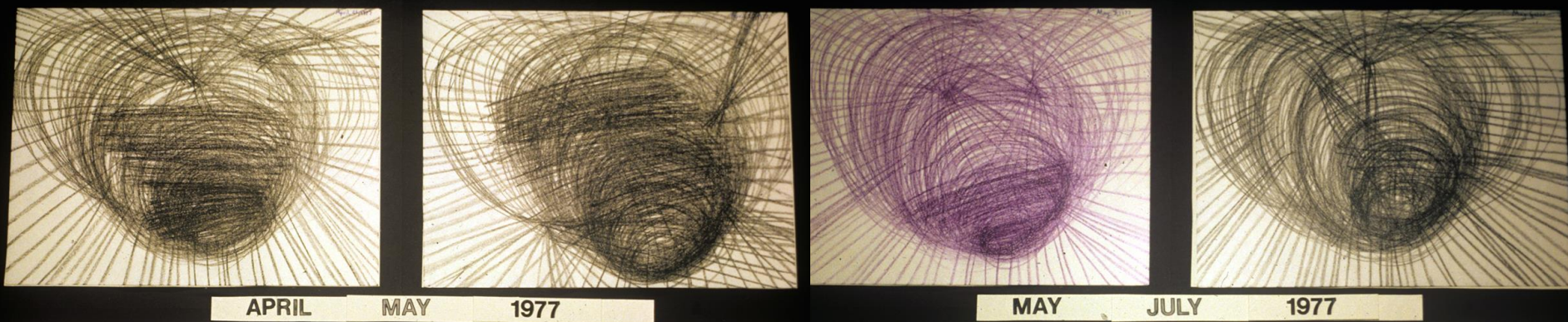


Fig. 2



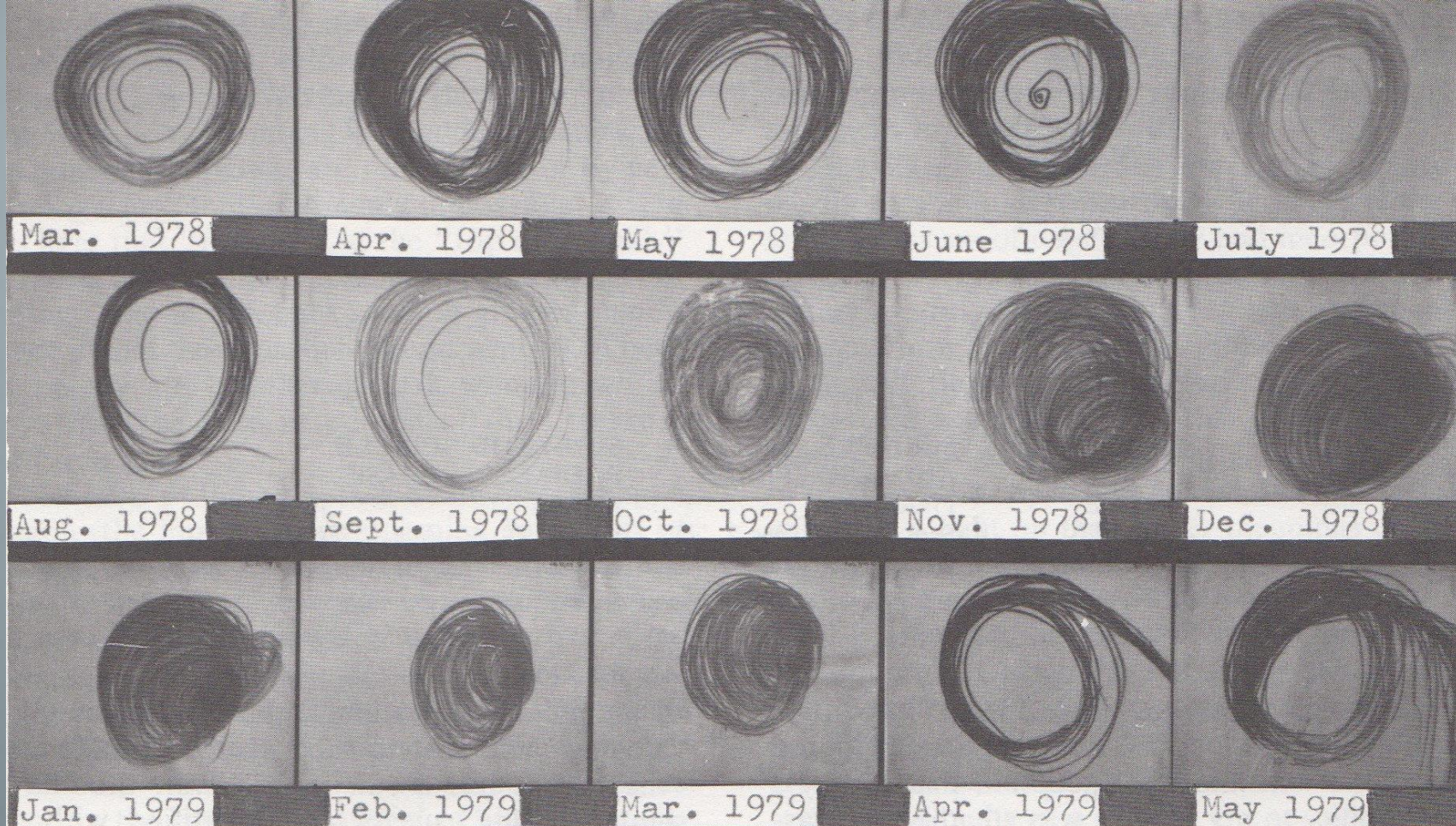
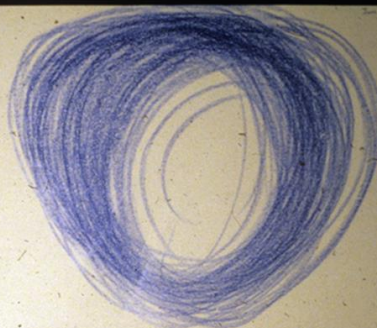


Fig. 3



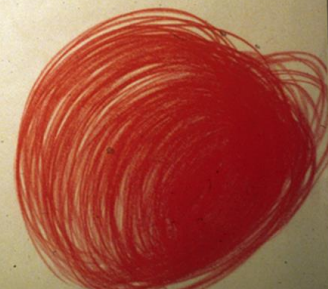
MAY 1978



JUNE 1978



NOVEMBER 1978



DECEMBER 1978

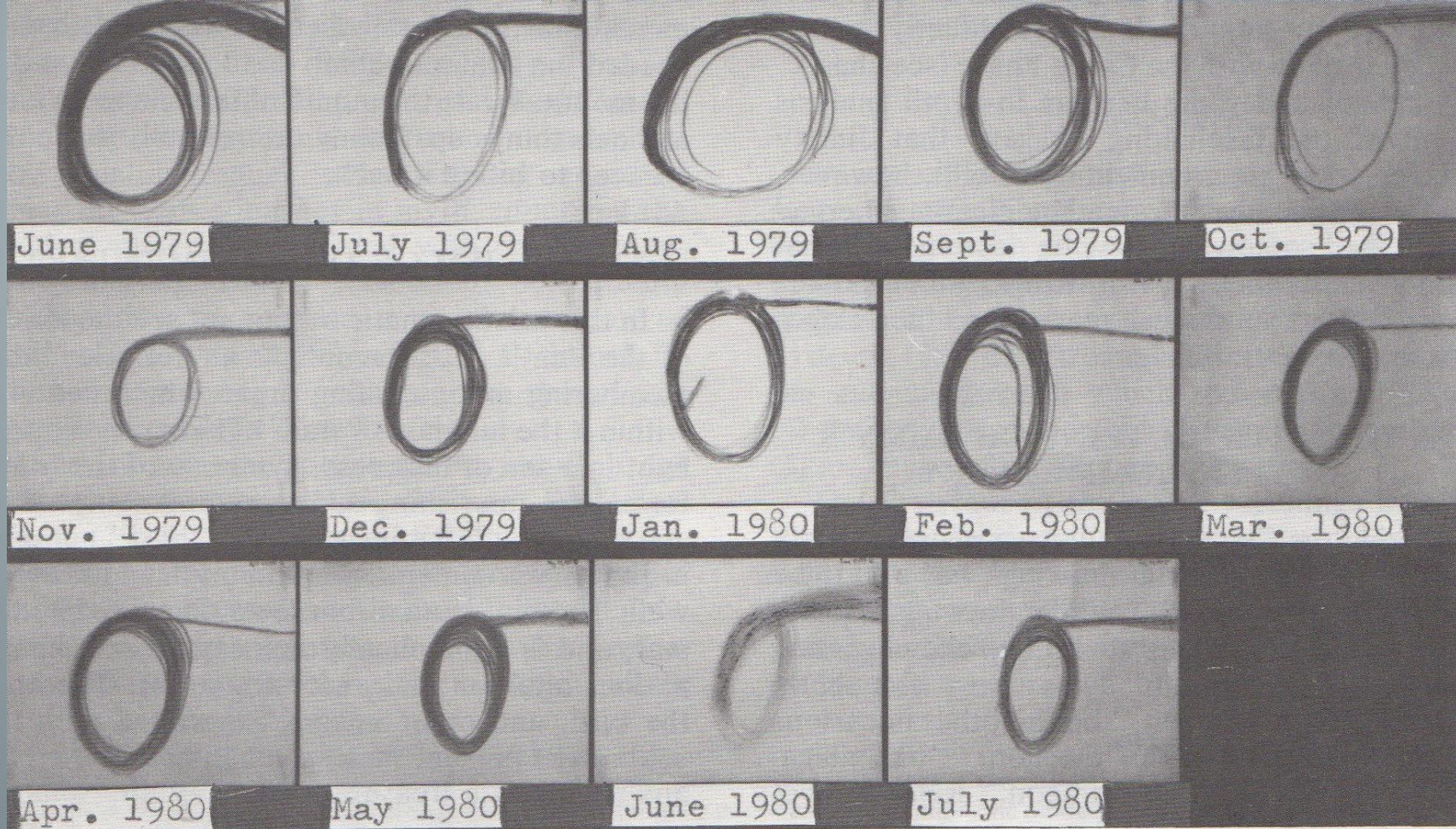


Fig. 4

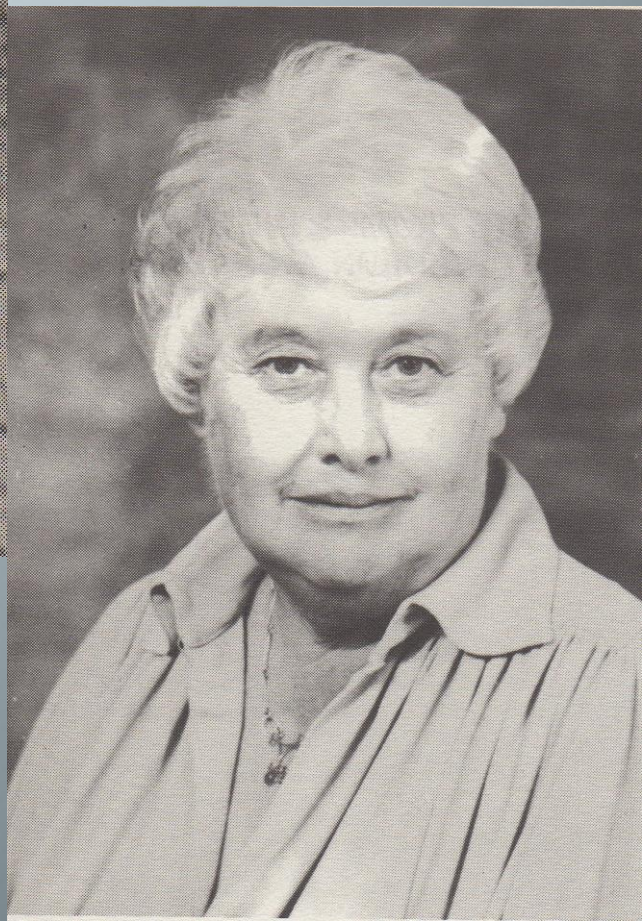


Margaret Mahler



Bruno Bettelheim

Francis Tustin



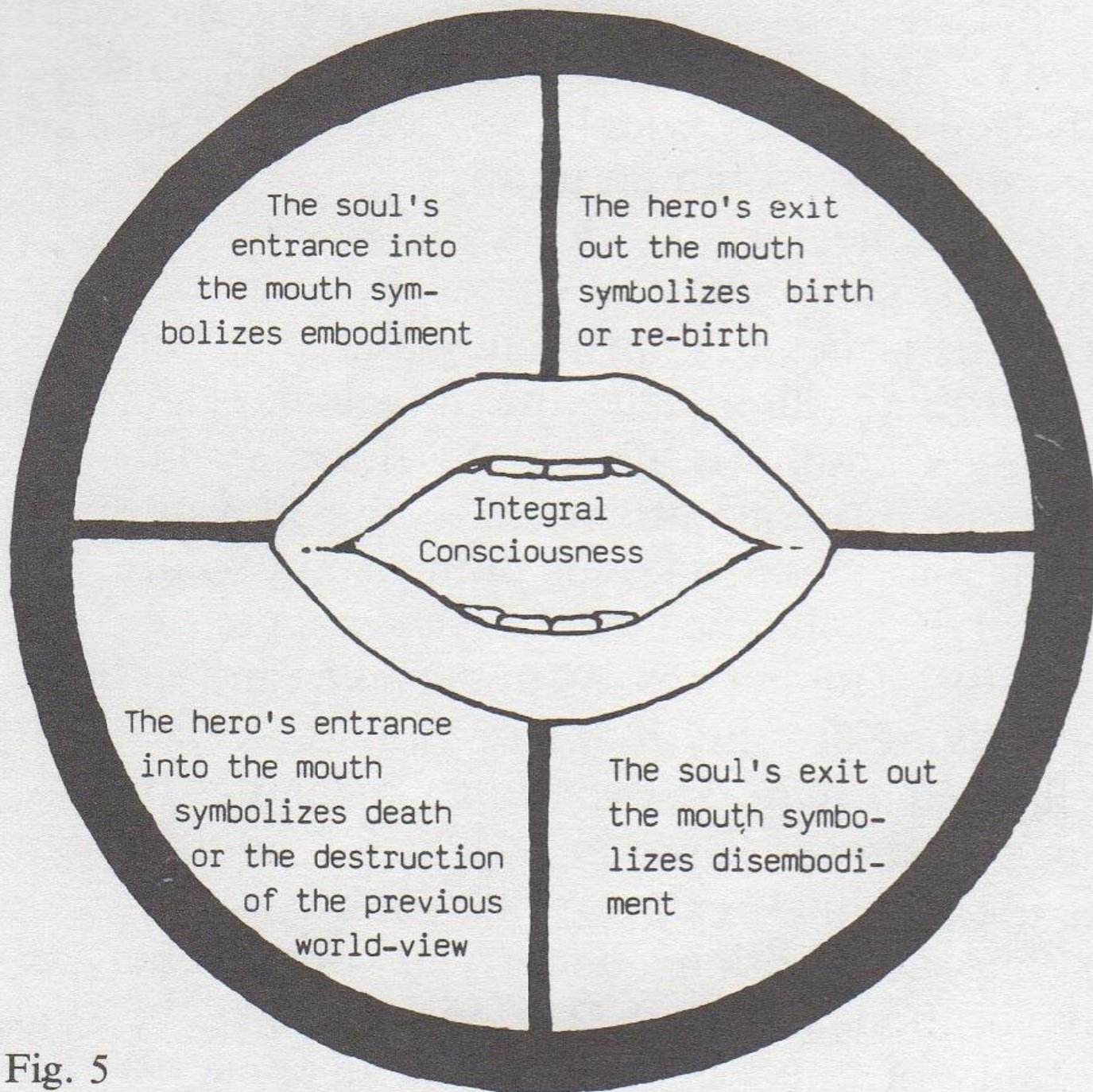


Fig. 5

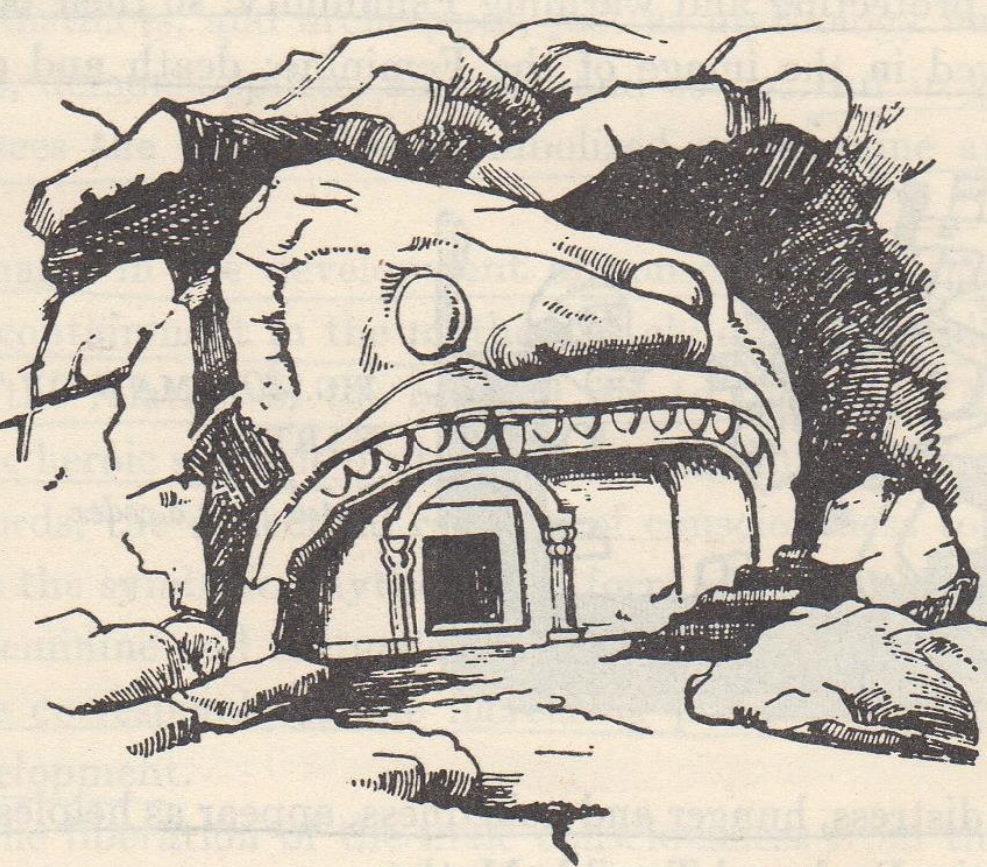
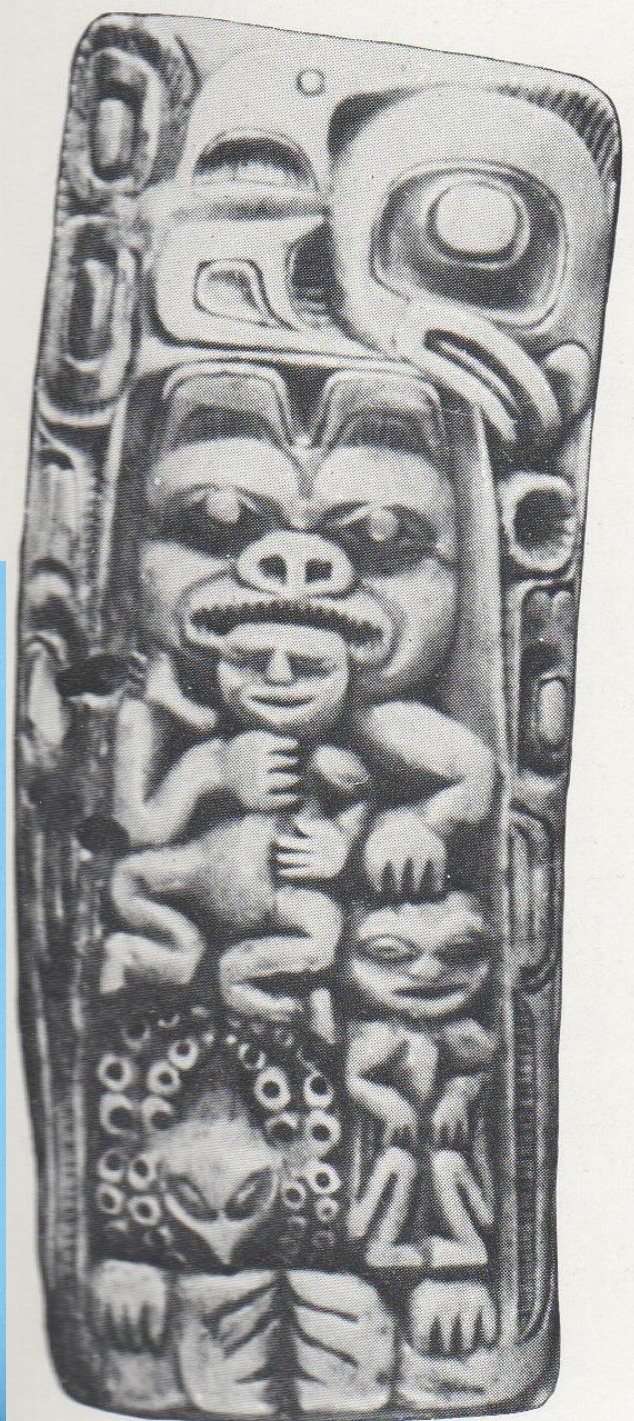
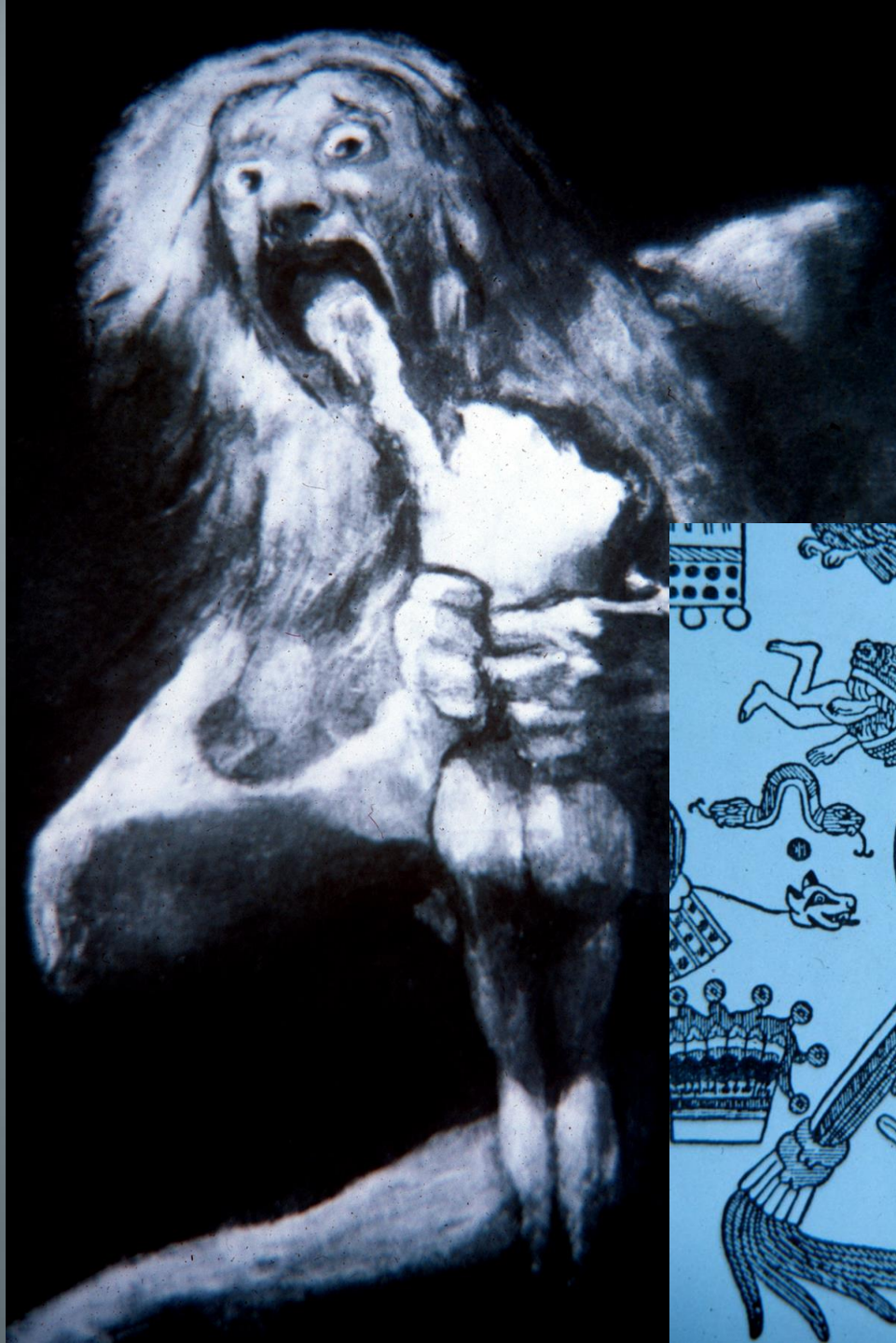


FIG. 31. ENTRANCE TO THE "TIGER CAVE"

Udayagiri Hill, India







187. The dragon spewing forth Jason, after drinking the potion prepared by Athene.—Attic vase (5th cent. B.C.)



182. Christ as the Saviour of souls.—Mural painting (12th cent.) church of the Braunweiler monastery, Rhineland



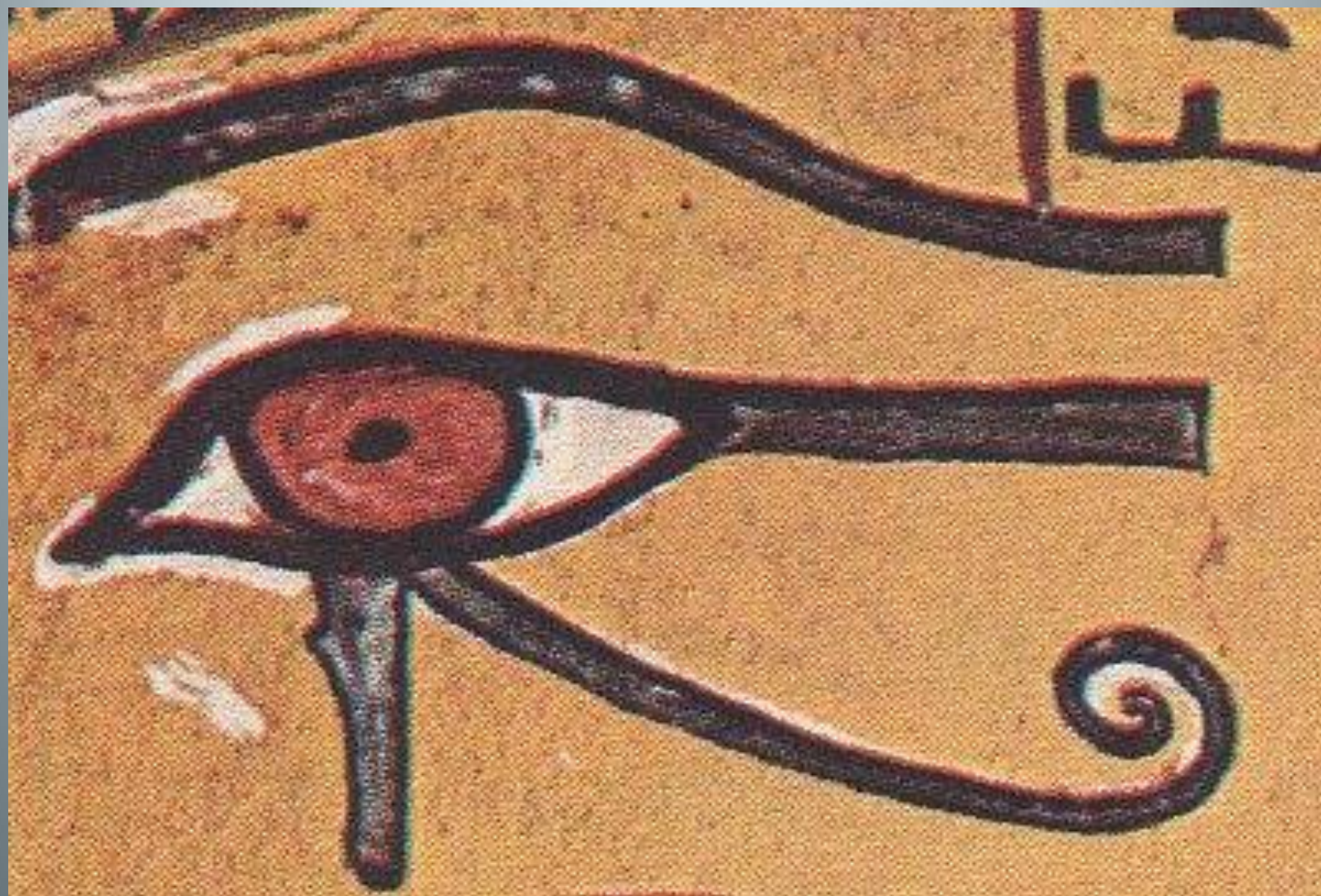


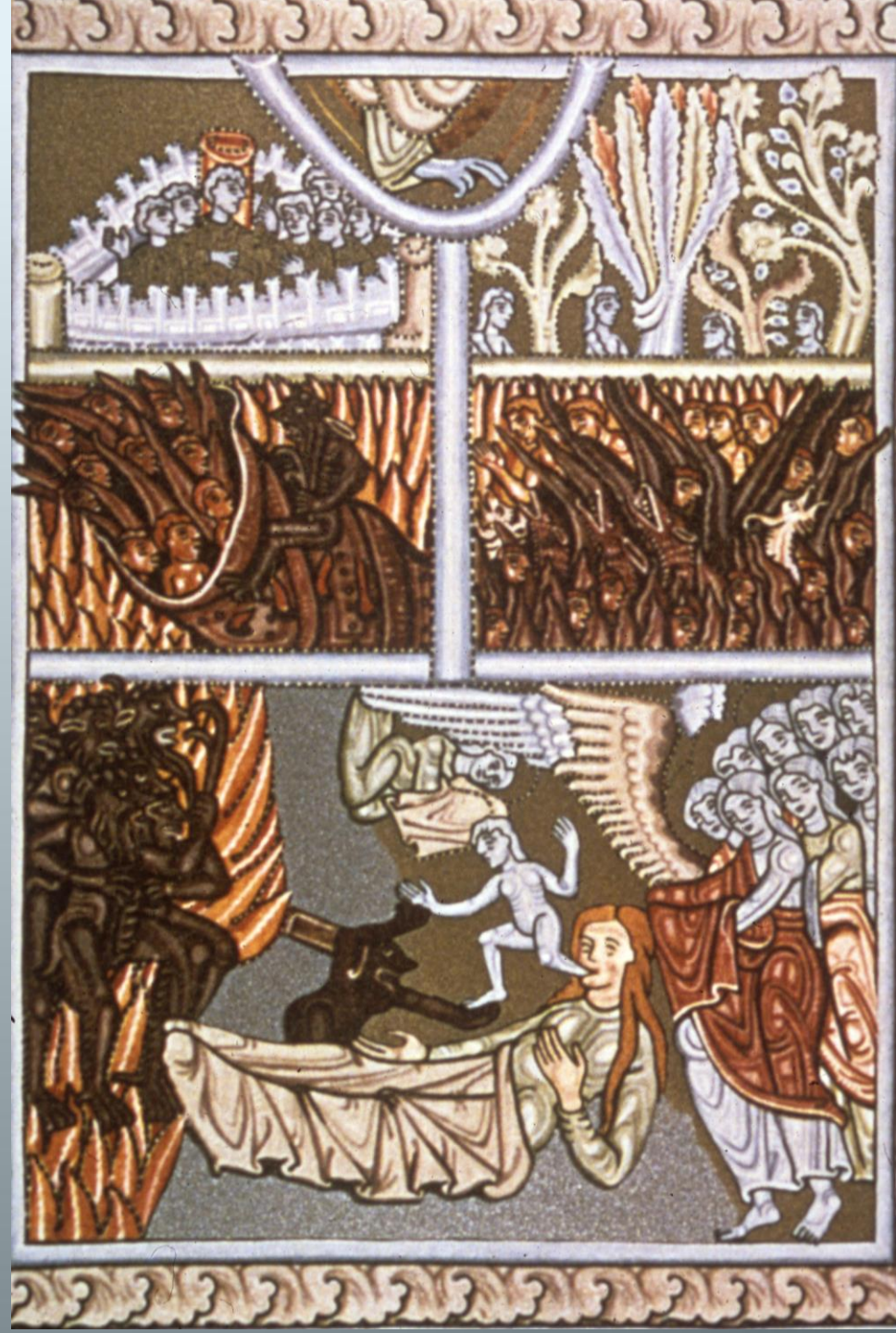


169. The "green lion" devouring the sun.—*Rosarium philosophorum* (1550)



The Reunion of the Soul & the Body









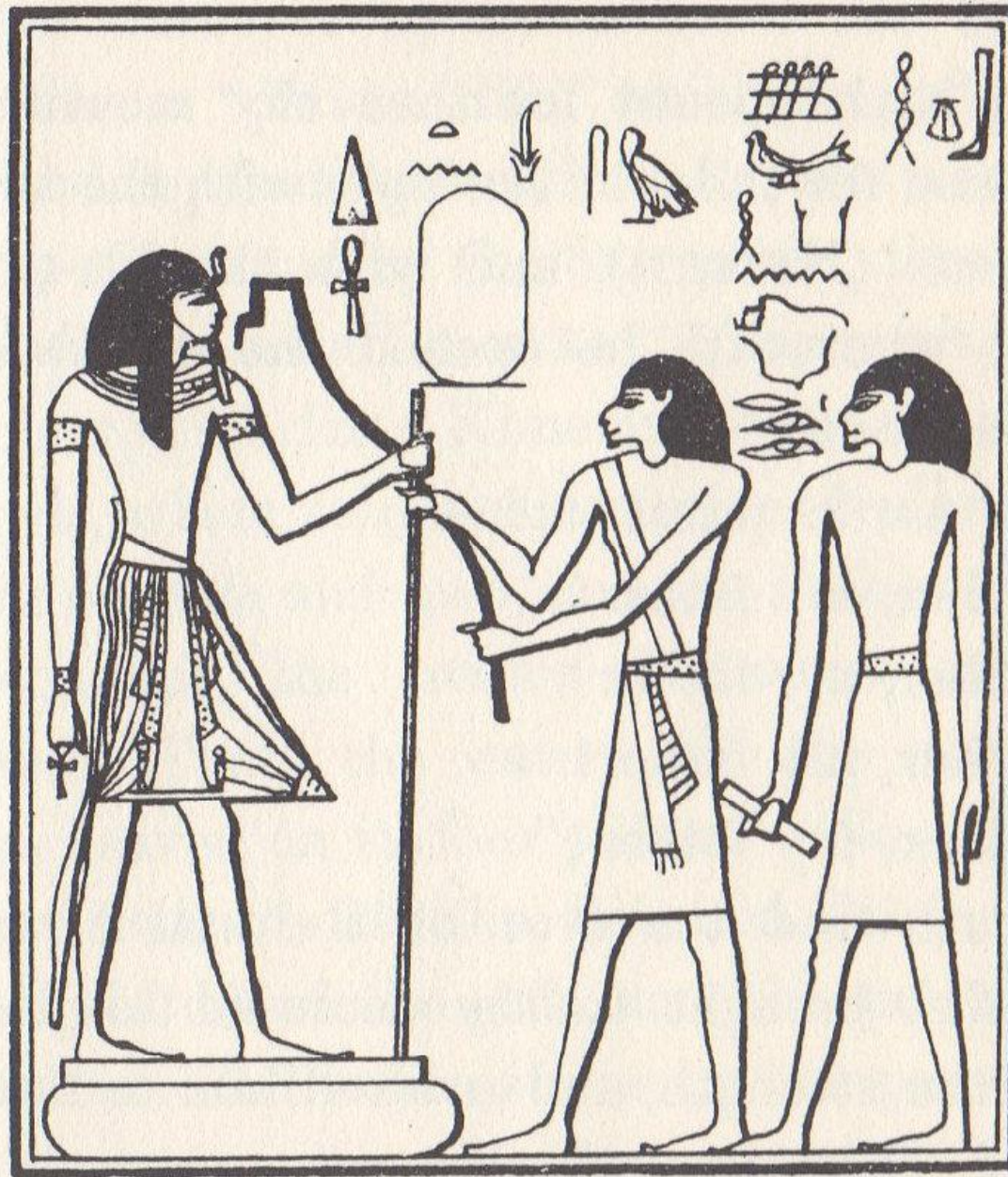


Poetically speaking,
autism is about a soul that is
unable or unwilling to embody.

The Psychosexual - Psyche projected onto the skin

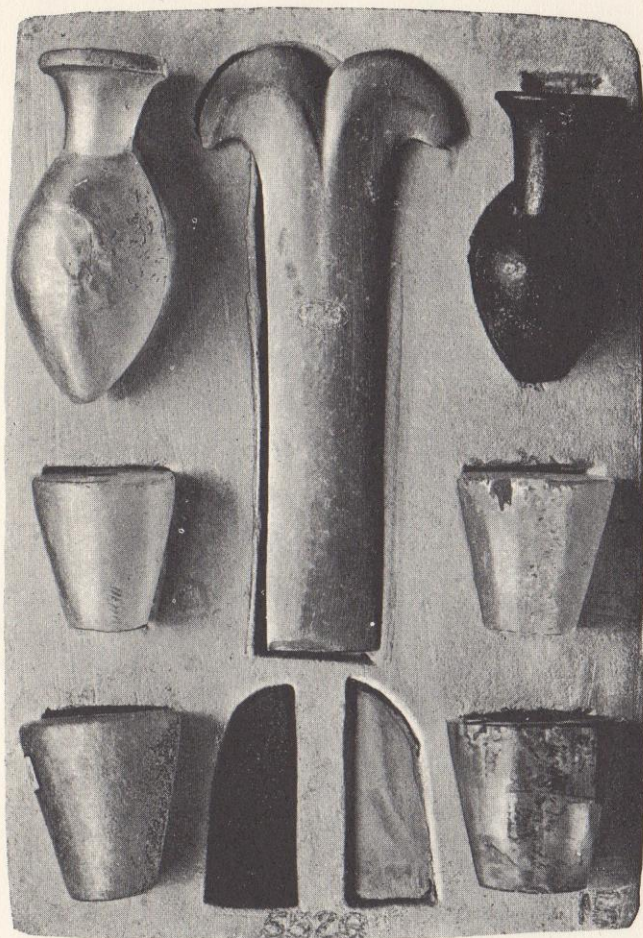
The Psychosocial - Psyche projected into the social
setting

The Psychomythic - Psyche projected onto the
walls of the universe and into spiritual,
philosophical and political concerns



The Sem priest pressing the lips of the statue with the Ur-hekau instrument.

Frontispiece.



Set of instruments used in the ceremonies performed in connection with the Opening of the Mouth.
From Abydos, VIth Dynasty (British Museum, No. 5526).

THE BOOK
OF
OPENING THE MOUTH
*THE EGYPTIAN TEXTS WITH ENGLISH
TRANSLATIONS*

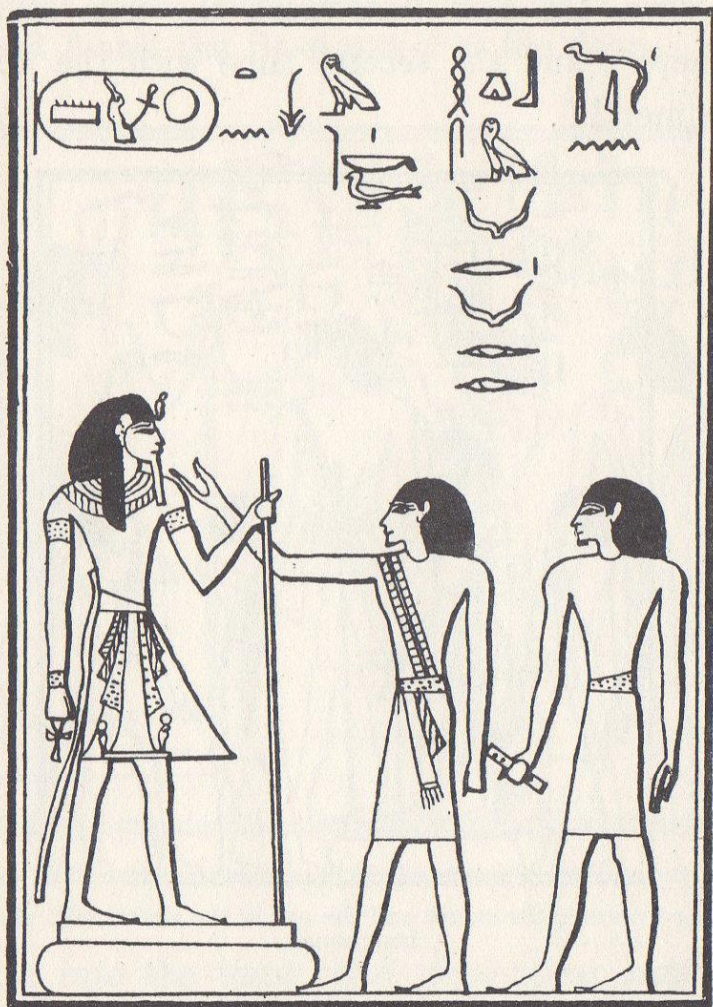
BY
E. A. WALLIS BUDGE, M.A., Litt.D., D.Litt., D.Lit.

KEEPER OF THE EGYPTIAN AND ASSYRIAN ANTIQUITIES
IN THE BRITISH MUSEUM

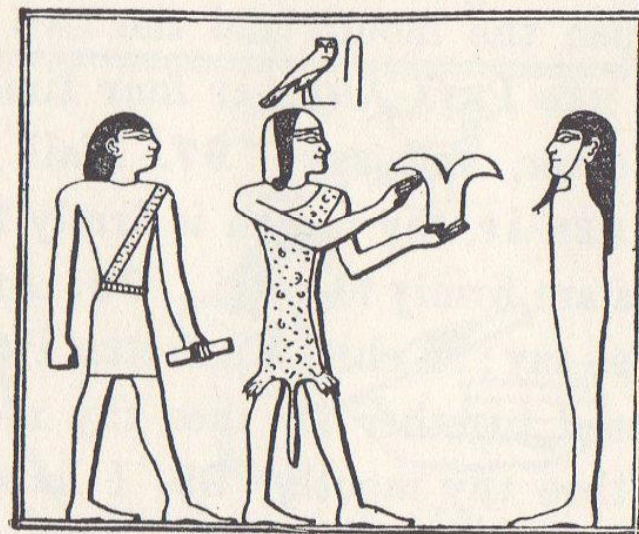
VOLUME I.

TWO VOLUMES IN ONE

BENJAMIN BLOM, INC.
Publishers New York 1972



The Sem priest opening the mouth of the statue with his little finger in the presence of the Kher heb.



The Sem priest establishing the jaws of the statue with the Pesh-en-kef instrument.



The Sem priest presenting the breast.

THE SEVENTY-FIRST CEREMONY.

A breast of an animal, with the formula :—

“Osiris Unās, the Eye of Horus hath been presented
“unto thee, so that it may embrace thee.”



FUNERARY RITUAL

- 1) Reunion of the soul and the body
- 2) Rebirth
- 3) Reunion with the mother

PSYCHOLOGICAL TASKS OF INFANCY

- 1) Embodiment, attachment, bonding
- 2) Psychological birth, becoming conscious
- 3) Entry into a warm relationship
with a mothering figure.





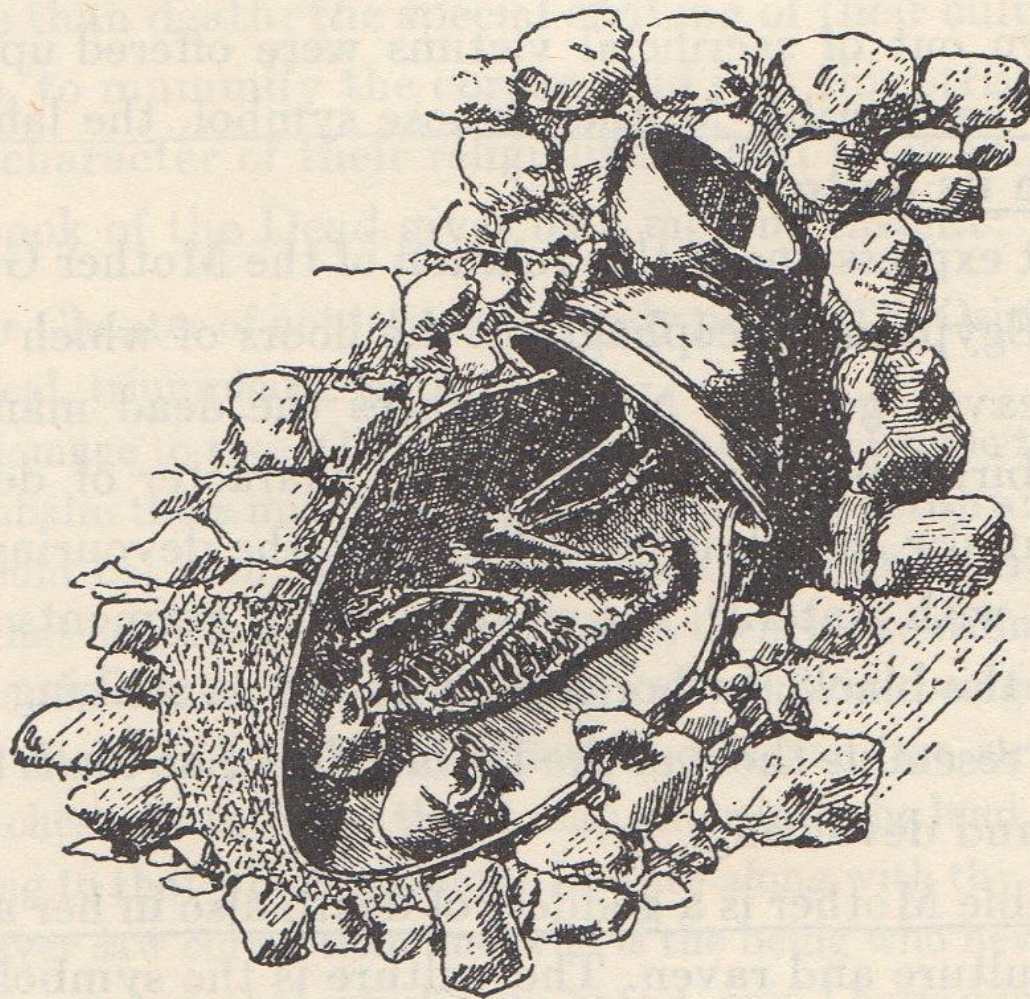


FIG. 37. CHILD'S SKELETON IN BURIAL URN

Excavated near Nazareth, Palestine



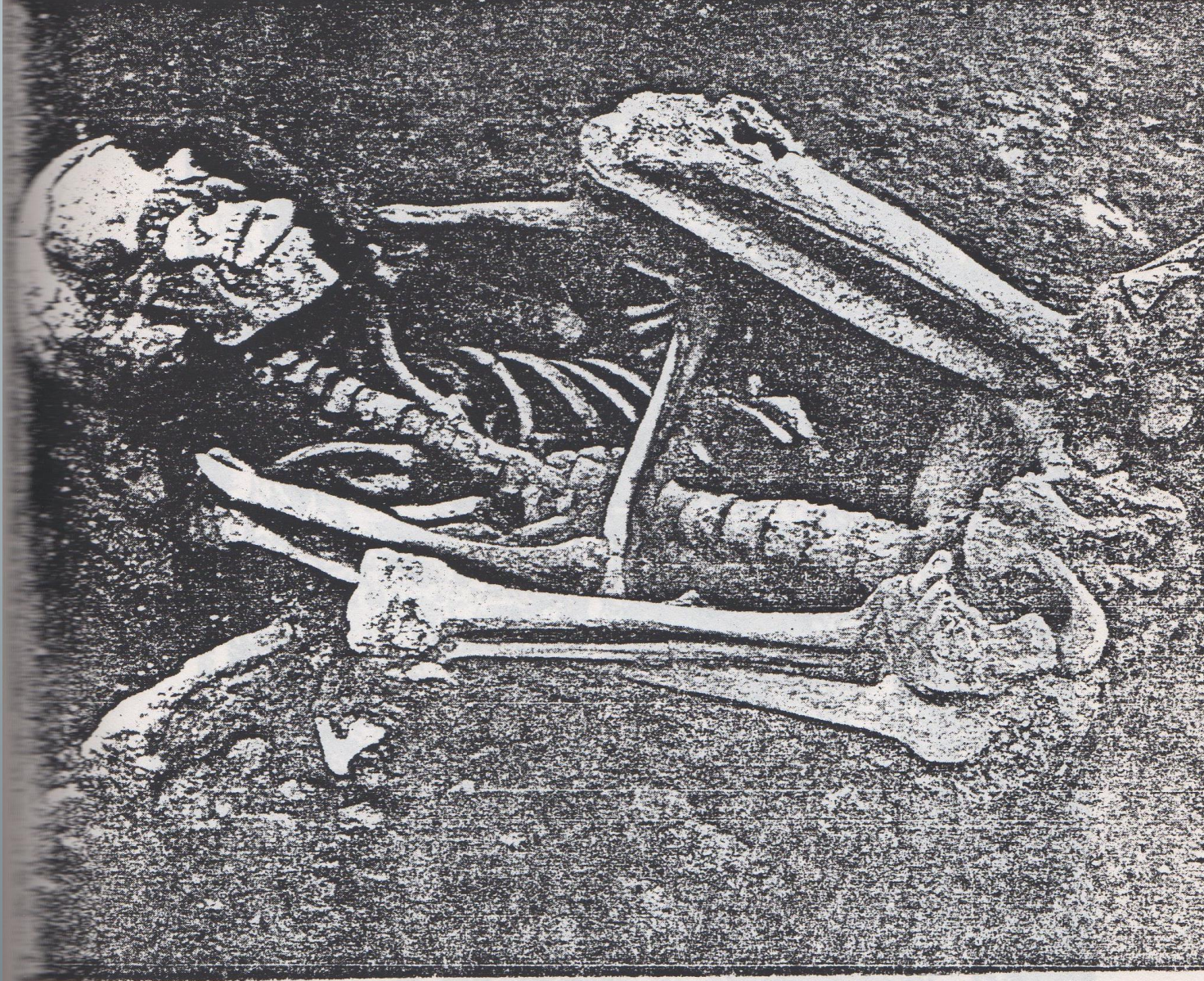
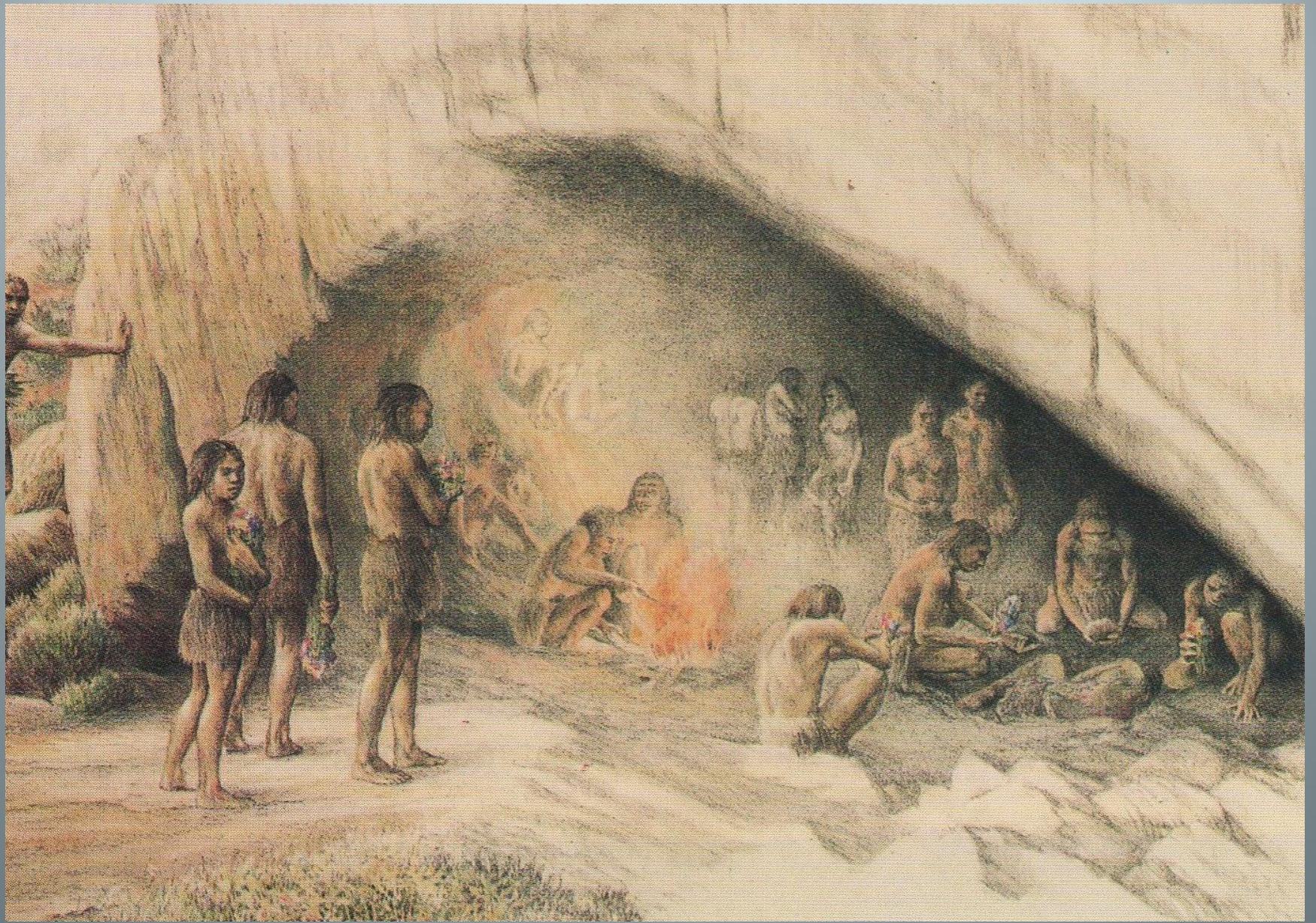
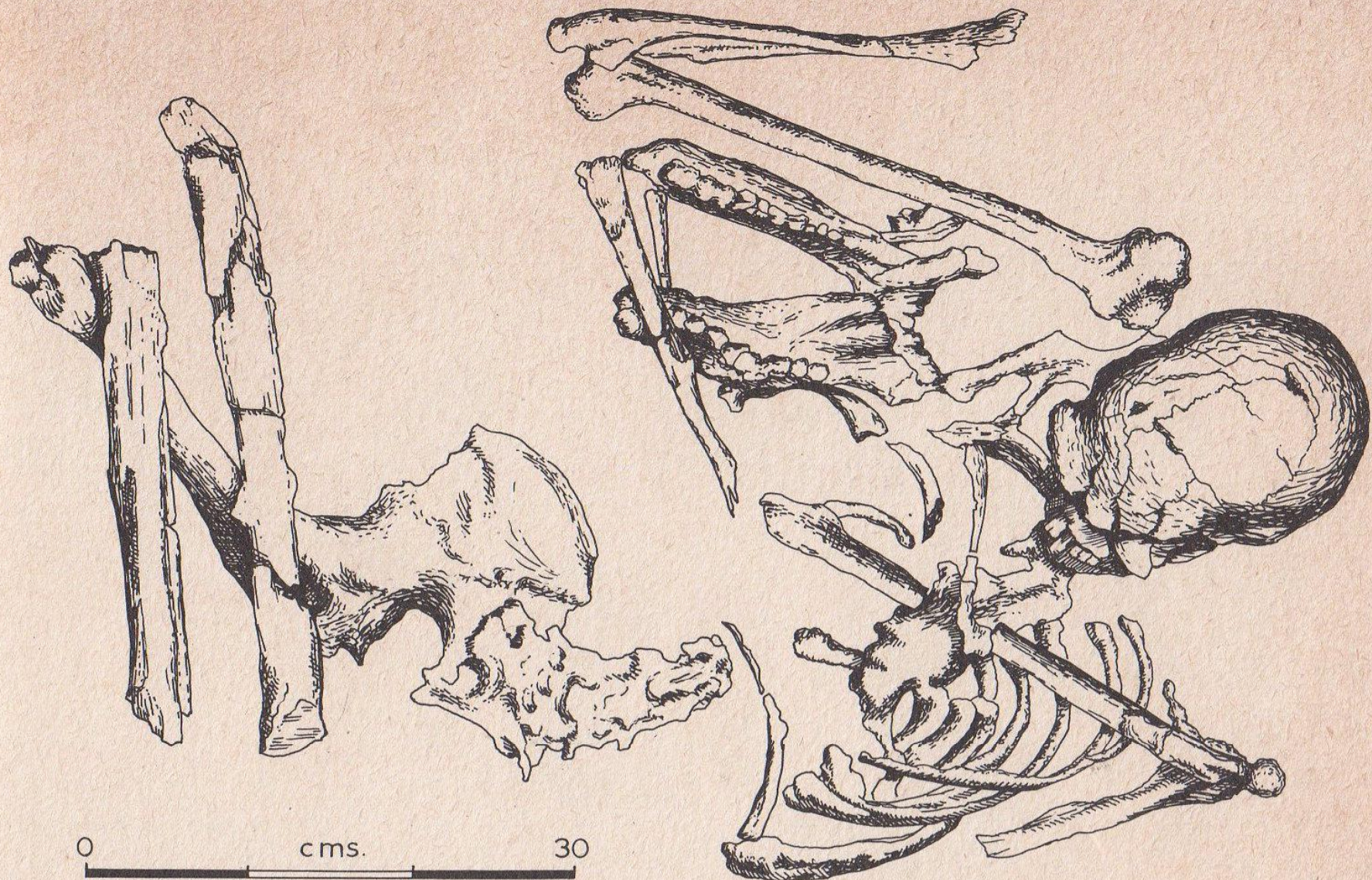


Plate 47: Neolithic burial of an adult in the fetal position.
Note the large flat pebble inserted between the jaws.
Nea Nikomedeia. c. 6220 B.C. Found in Old World Archaeo-
logy: Foundations of Civilization, by R. Rodden





22 An idea of death as a personal fate and possibly some awareness of a religious feeling first appears in Neanderthal times. The careful burial of ten individuals in a cemetery on the terrace of Mugharet-es-Skhul, Mont Carmel, shows this. Associated with one adult male burial from this site were the jawbones of a great wild boar which the skeleton is apparently clasping

Sigmund Freud

- 1. Obsessional neurosis
and hysteria**
- 2. The phallic stage**
- 3. Totemism & hero myths**
- 4. Sacrificial totemic feast**
- 5. Fraternal Clan**

John Weir Perry

- Brief psychotic disorder**
- Adolescence**
- Myth of sacral kingship**
- Ancient new year festival**
- Urban Revolution**

Infantile Autism

Oral stage—Early infancy

Myth of Death and Rebirth

Ancient Funerary Ritual

UPPER PALEOLITHIC

Brief Psychotic Disorder

Genital stage—Adolescence

Myth of Sacral Kingship

Ancient New Year Festival

URBAN REVOLUTION

1

Infantile autism

Oral stage—Early infancy

Myth of Death and Rebirth

Ancient funerary ritual

UPPER PALEOLITHIC

3

Hysteria

Phallic Stage - Oedipal child

Myth of the hero

Planting and Harvest rituals

HIGH NEOLITHIC

2

Obsessional neurosis

Anal Stage – Toddler

Myth of Paradise and the
Fall from Grace

Sacrifice; House-building ritual

NEOLITHIC

4

Brief Psychotic Disorder

Genital Stage—Adolescence

Myth of Sacral Kingship

Ancient New Year festival

URBAN REVOLUTION

Thank you for your attention.

This has been an introduction to a larger piece of work that has occupied me for 40 years.

It is not yet published but I call it:

Libido, Culture and Consciousness:

Speculations on the Relationship between Psychological
Development and Cultural Evolution

Daniel Benveniste, Ph.D.

- Film of autistic child's drawings if there is time
- Five minutes

Autism,
The Symbolism of the Mouth
and a New Approach to
‘Totem and Taboo’

Daniel Benveniste, Ph.D.

A Carter–Jenkins Center

production



Copyright 2016

