

The Carter - Jenkins Center

presents



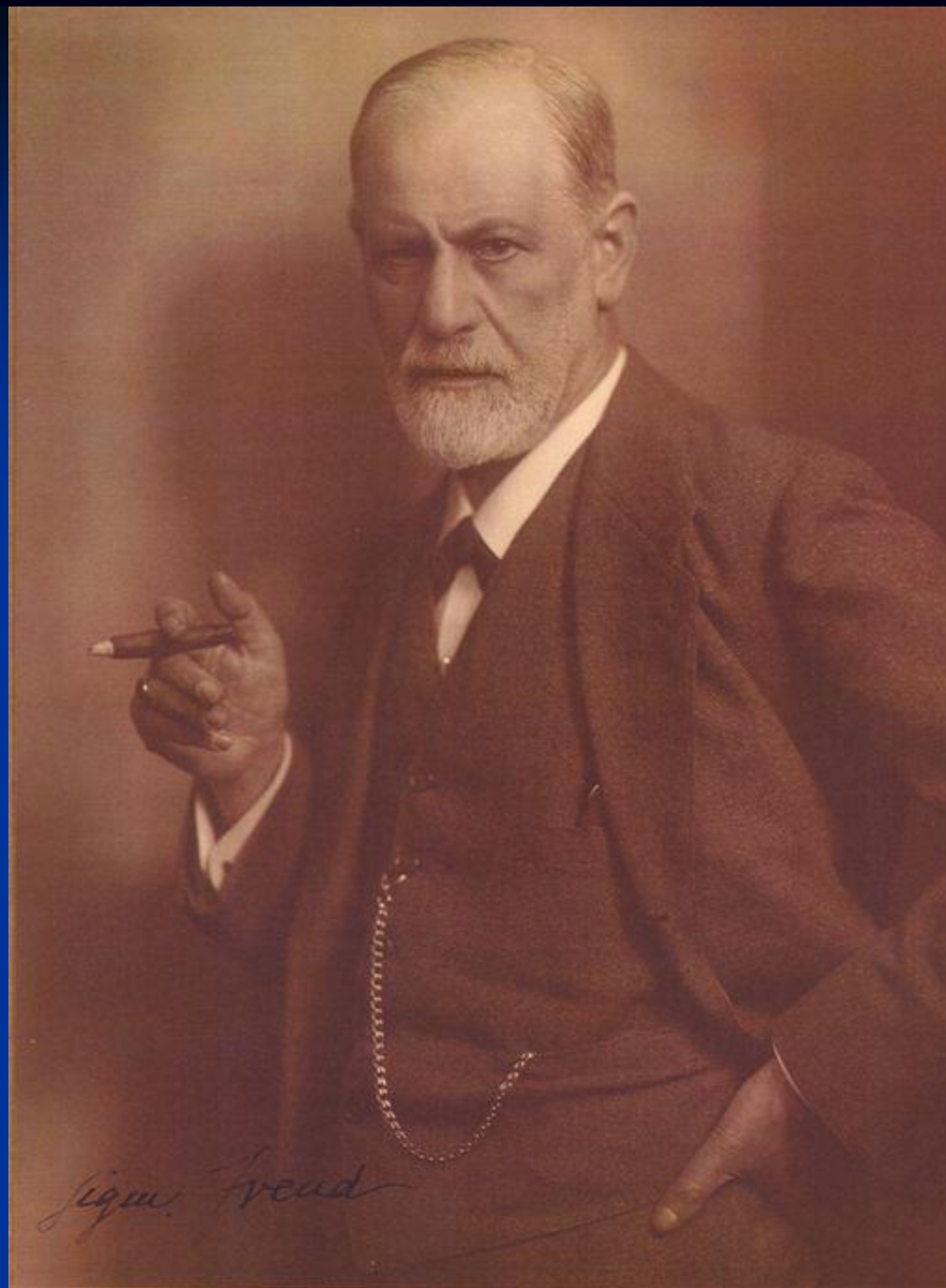
Daniel Benveniste, Ph.D.



Libido Development and Cultural Evolution
Part II

The Brief Psychotic Disorder, Autism
and their Myth and Ritual Correlates

Daniel Benveniste, Ph.D.





Geza Roheim

Totem and Taboo:

Some Points of Agreement between the Mental Lives of Savages and Neurotics

- 1) A stage of normal development
- 2) A form of psychopathology
- 3) A stage in cultural development
- 4) A myth
- 5) A ritual

The Oedipal Stage

Neurosis (esp.
obsessional neurotics)

Totemic culture

Totemism/Oedipus

The sacrificial totemic
feast

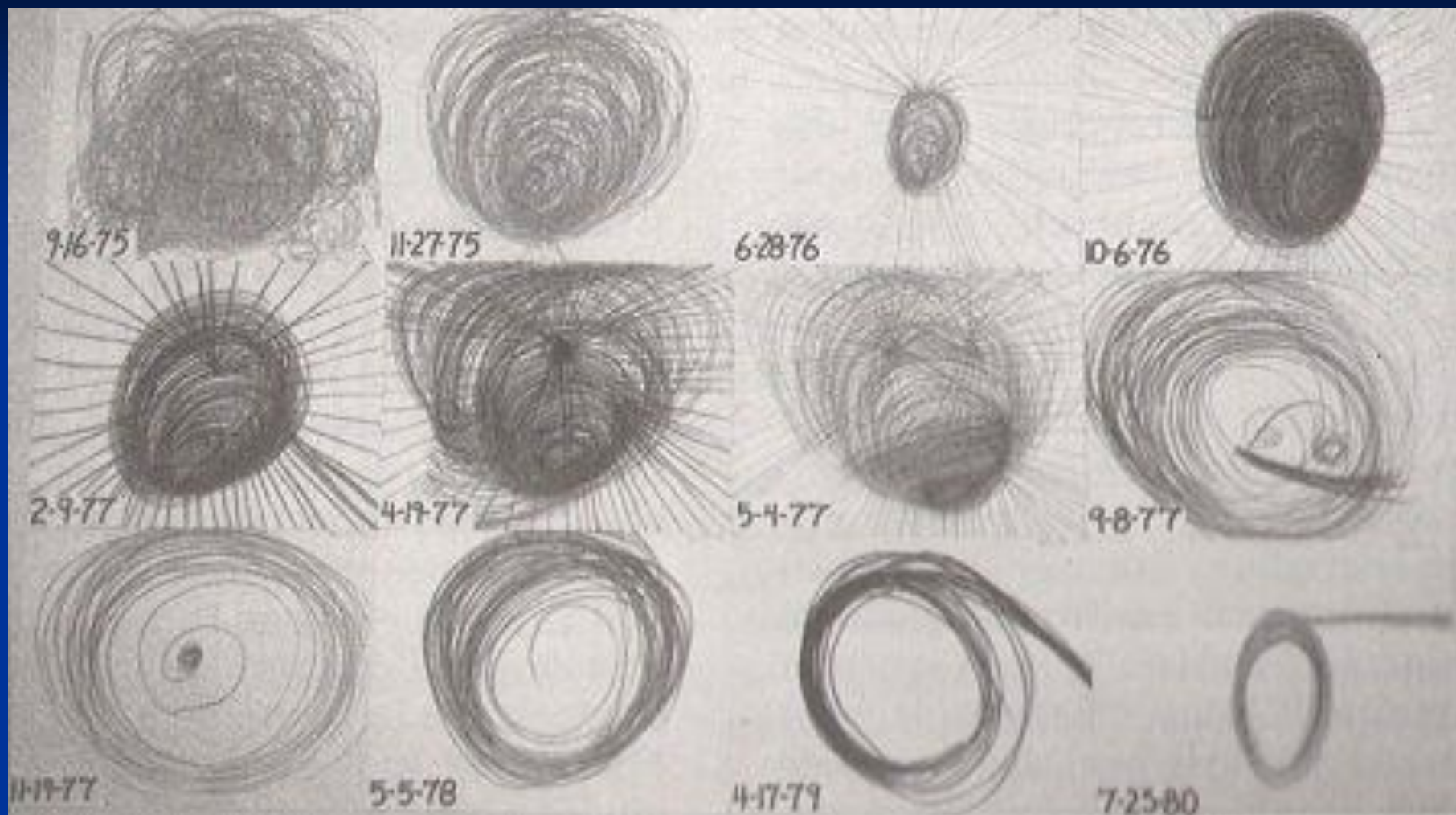
The points of agreement:

- 1) Erotic desire for the mother and the horror of incest
- 2) Desire to kill the father and the adoration of the father

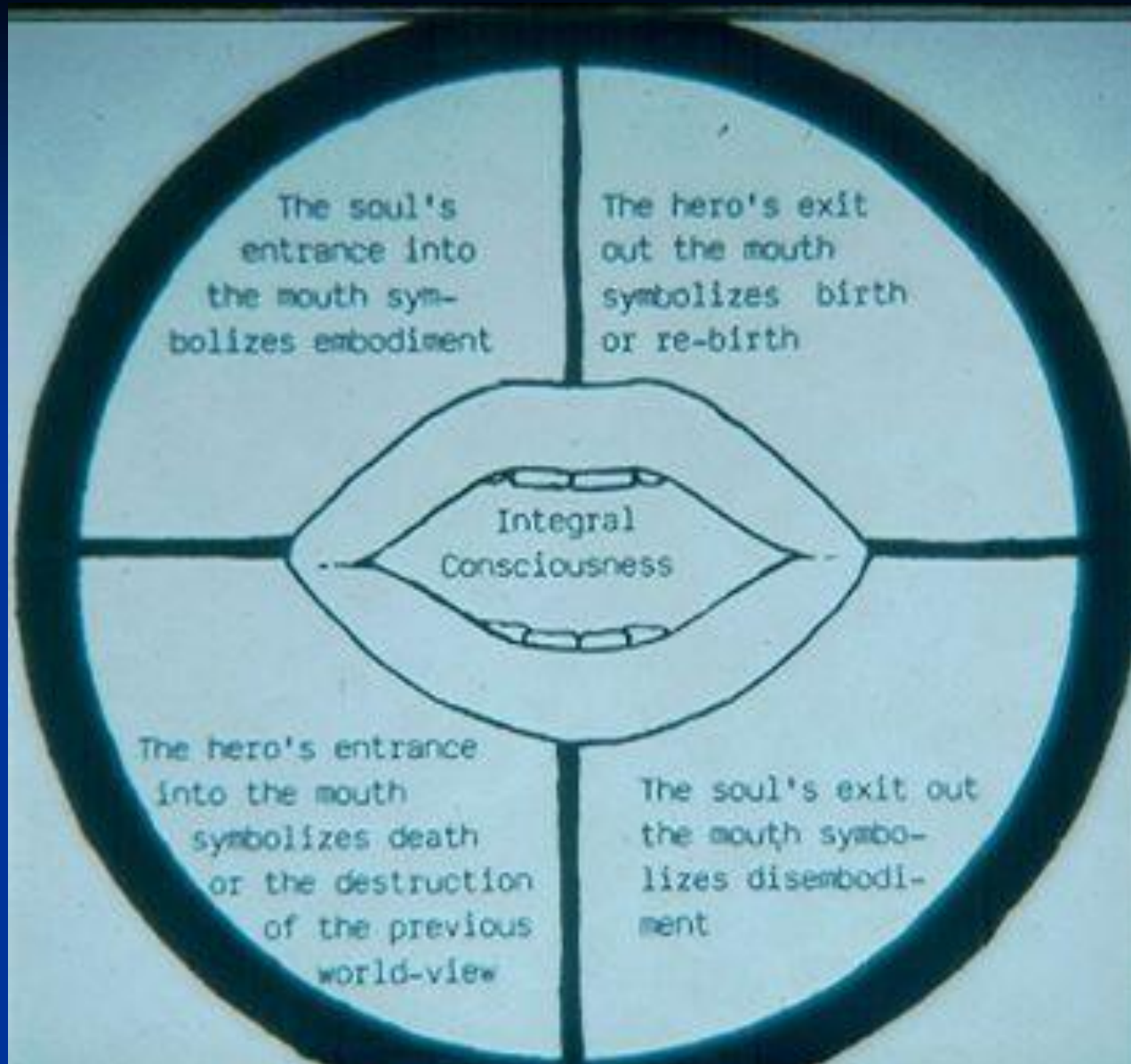


John Weir Perry

1. Center: The sense of being located at a world center or cosmic axis.
2. Death: Themes of dismemberment or sacrifice, died and in an afterlife state.
3. Return to Beginnings: A return to creation of cosmos and early childhood.
4. Cosmic Conflict: There is a world conflict of cosmic importance.
5. Threat of opposite: A threat from the opposite sex, being turned into it.
6. Apotheosis: The person experiences an apotheosis as royalty or divinity.
7. Sacred Marriage: The person enters upon a sacred marriage.
8. New Birth: A new birth of oneself, ideas of rebirth; Divine Child.
9. New Society: A new order of society is envisioned, a New Age.
10. Quadrated World: A fourfold structure of the world or cosmos is established. (Perry, 1974, p. 29-30)



Drawings of an autistic boy



The Mouth in Myth and Ritual



Chronos eating his children



Tlingit
shamanic
amulet



Quetzalcoatl
devouring a
person



Jonah entering and leaving the mouth of the great fish



Orb in the mouth of the Chinese dragon



Chinese dragon chasing the orb



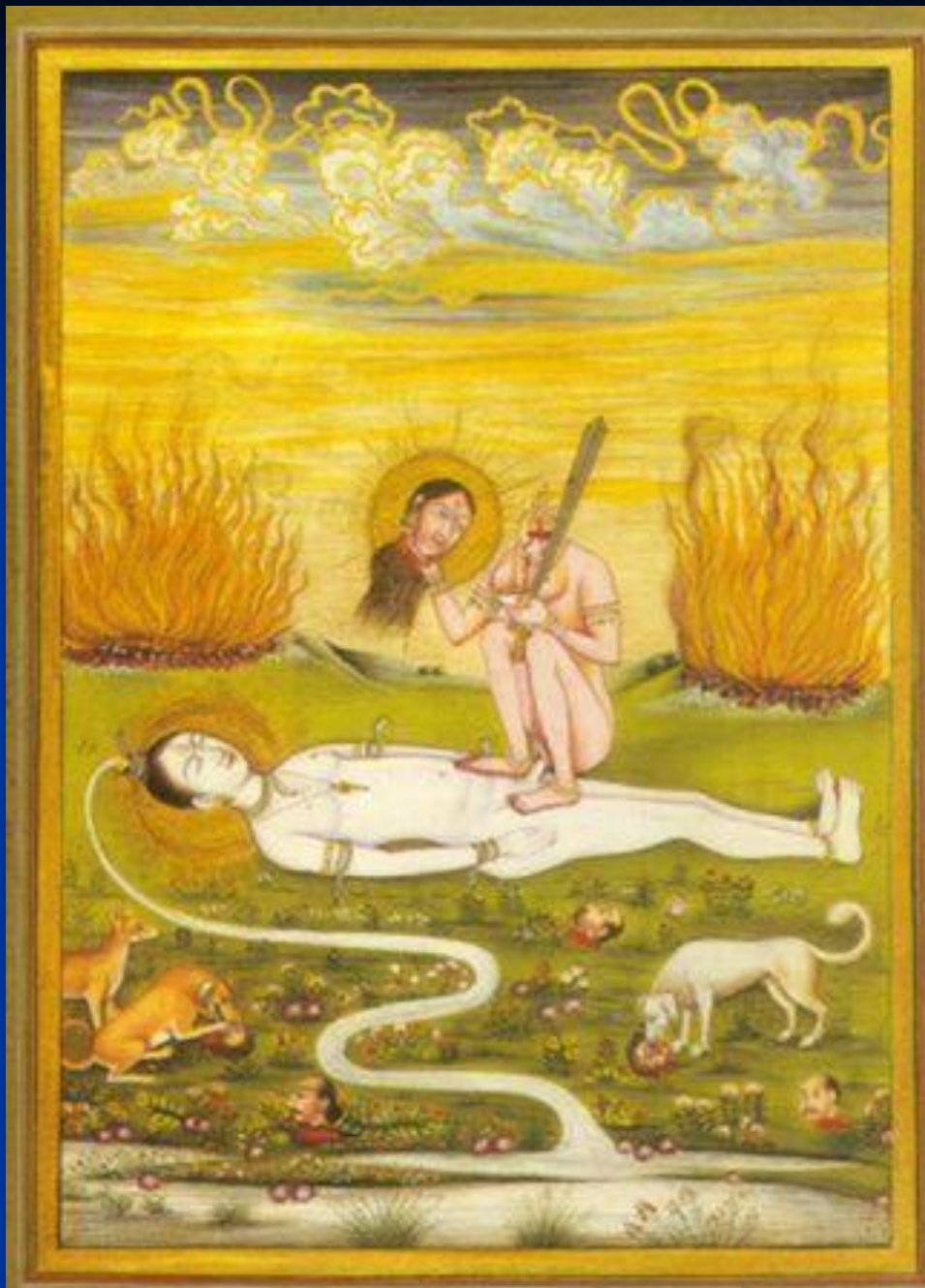
A woman dies in bed while her soul departs from her mouth.



Spirit and soul leaving the mouth of
the alchemist during the nigredo.



Demon coming out of the mouth of a man
during an exorcism.



Tantric Indian
painting.

The kundalini
emerges out the
seventh chakra or
Mouth of God.



Detail of Tantric Indian painting.
The kundalini emerging out the seventh chakra or
Mouth of God.

Prescriptions



Box of instruments used in the conservative treatment in connection with the opening of the mouth.
From *Diagnosis, X-Ray Therapy* (British Museum, No. 1000)

THE BOOK OF OPENING THE MOUTH *THE EGYPTIAN TEXTS WITH ENGLISH TRANSLATIONS*

BY
E. A. WALLIS BUDGE, M.A., Litt.D., D.Litt., D.Ley.
*Editor of the *Journal of Egyptian Archaeology*
and *The Egyptologist**

VOLUME I.

TWO VOLUMES IN ONE

BENJAMIN BLOM, INC.
Publishers New York 1922



The Sem priest presenting the breast.

From the Book of
Opening the Mouth

Mouth as passageway for the soul

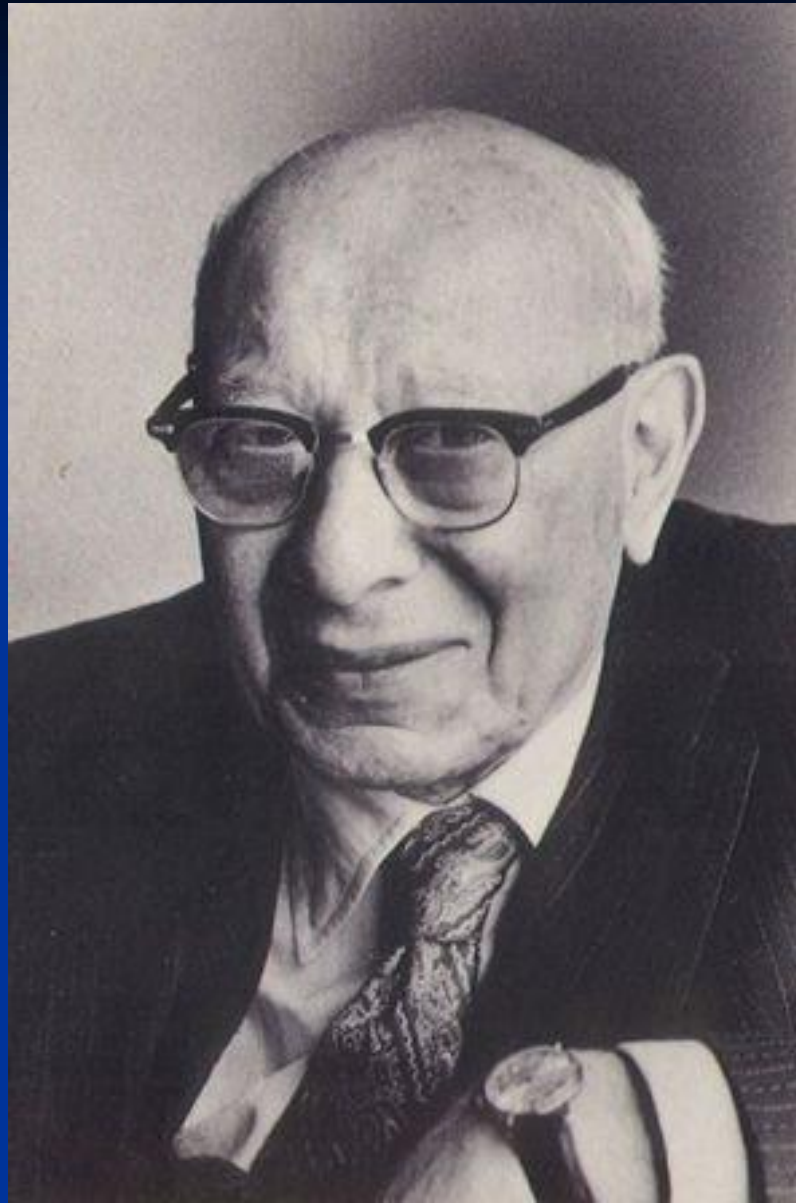
Funerary Ritual

Myth of Death and Rebirth

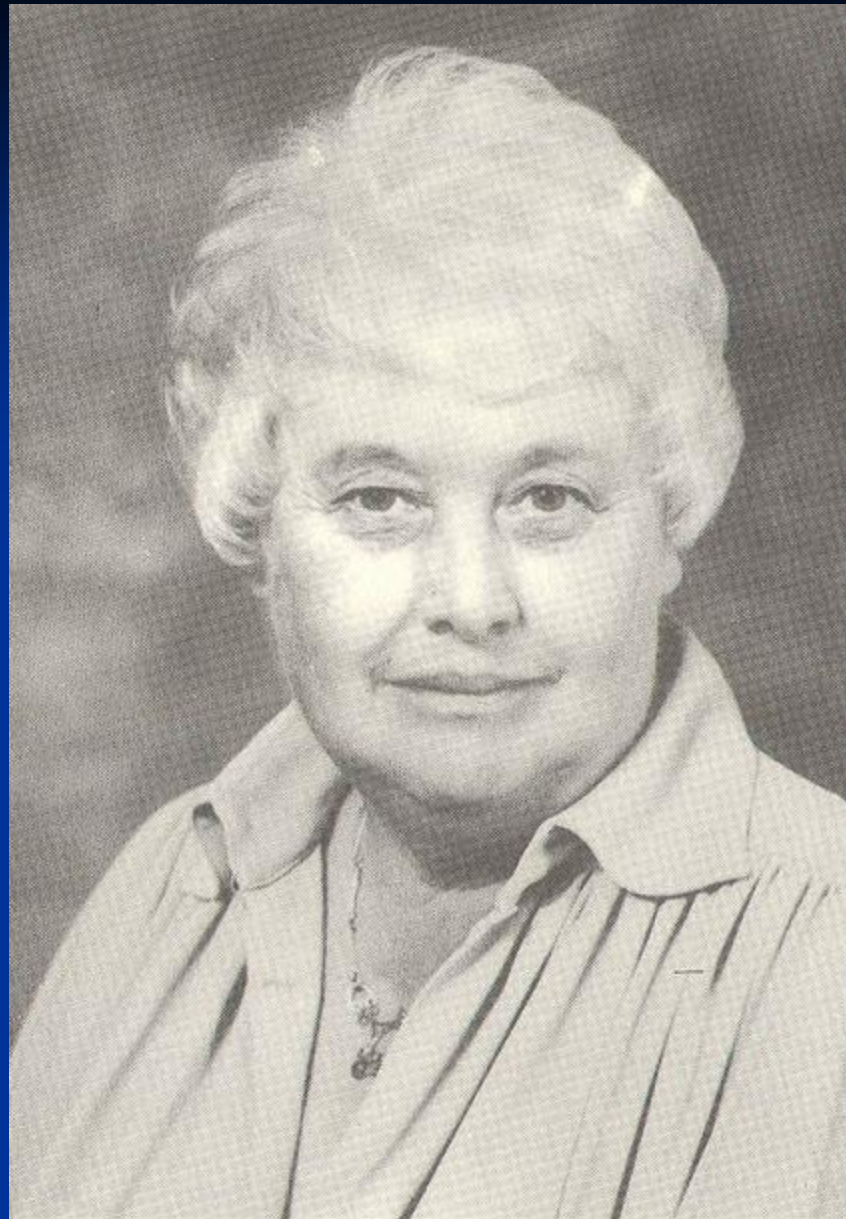
- (1) Reunion of the soul and the body
- (2) Rebirth
- (3) Reunion with the Mother

The healing tasks of the autistic child

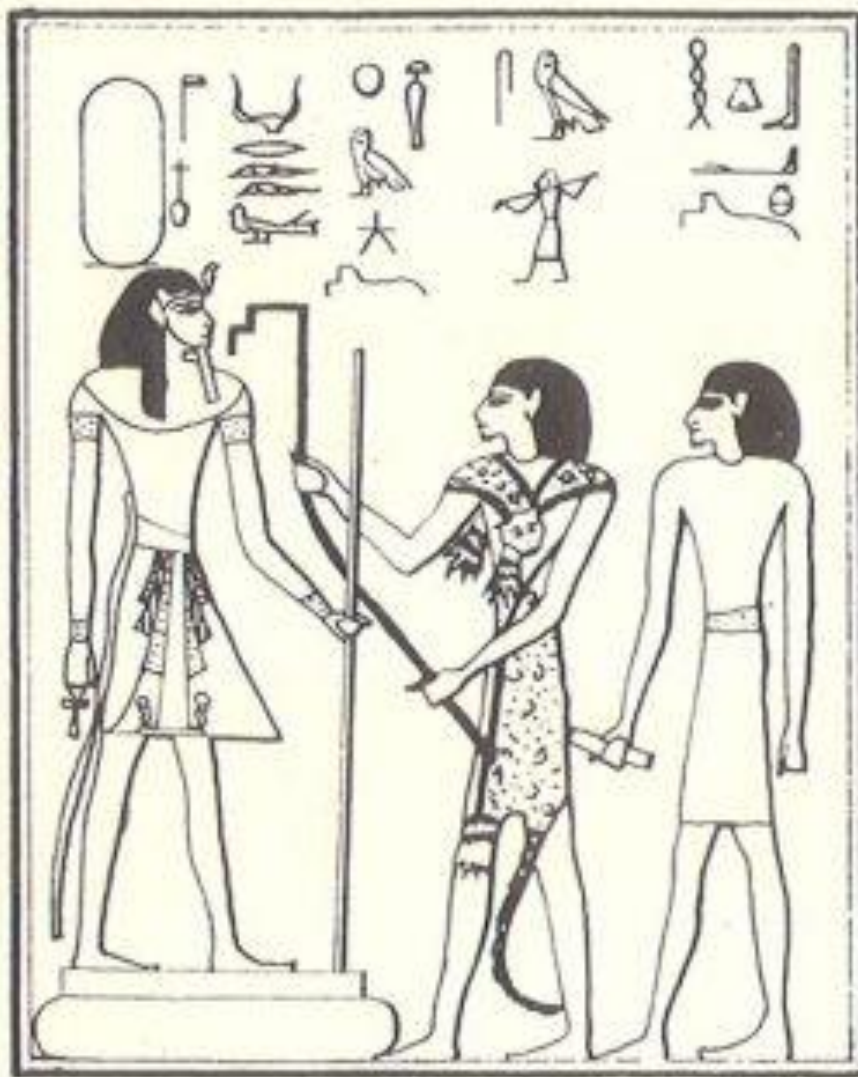
- (1) Embody
- (2) Be psychologically born
- (3) Enter into a warm relationship with a mother.



Bruno Bettelheim



Frances Tustin



The Sem priest opening the mouth of the statue with the Seb-ur and the Tun-â.

From the
Book of
Opening
the Mouth

If the myth of Sacral Kingship and the Ancient New Year's Festival are associated with the birth of civilization, at what point in cultural evolution would we locate the origin of myth of Death and Rebirth and the ritual of opening the mouth or perhaps just the Funerary Ritual?

Brief Psychotic Disorder

Adolescence

The Myth of Sacral Kingship

The Ancient New Years Festival

BIRTH OF CIVILIZATION

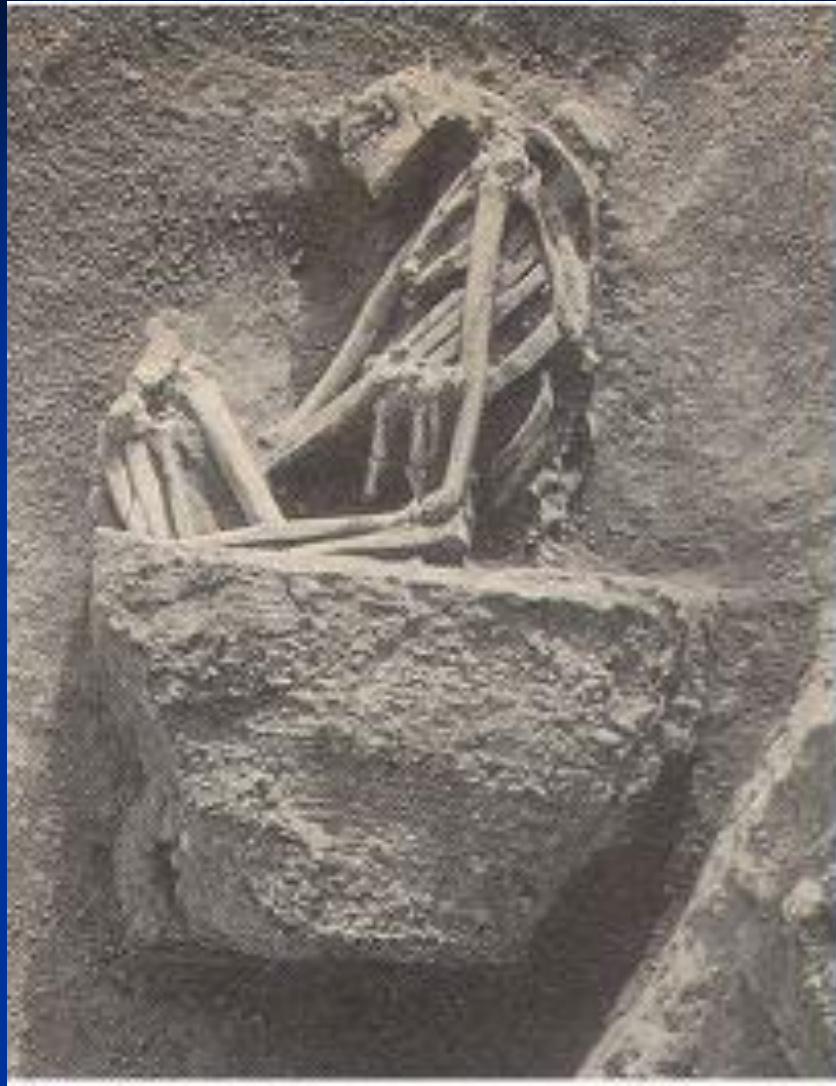
Infantile Autism

Early infancy

Myth of Death and Rebirth

The Ancient Funerary Ritual

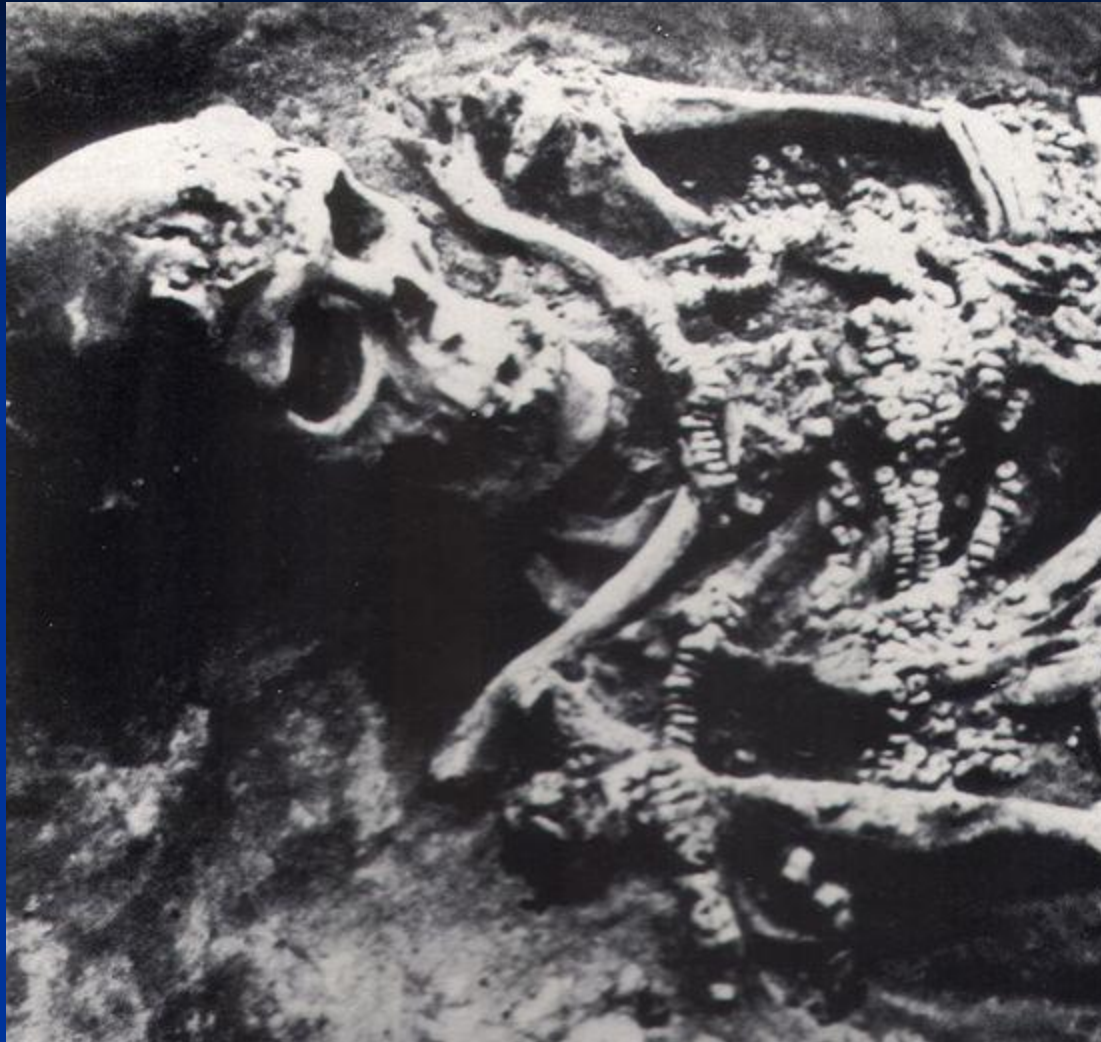
? ?



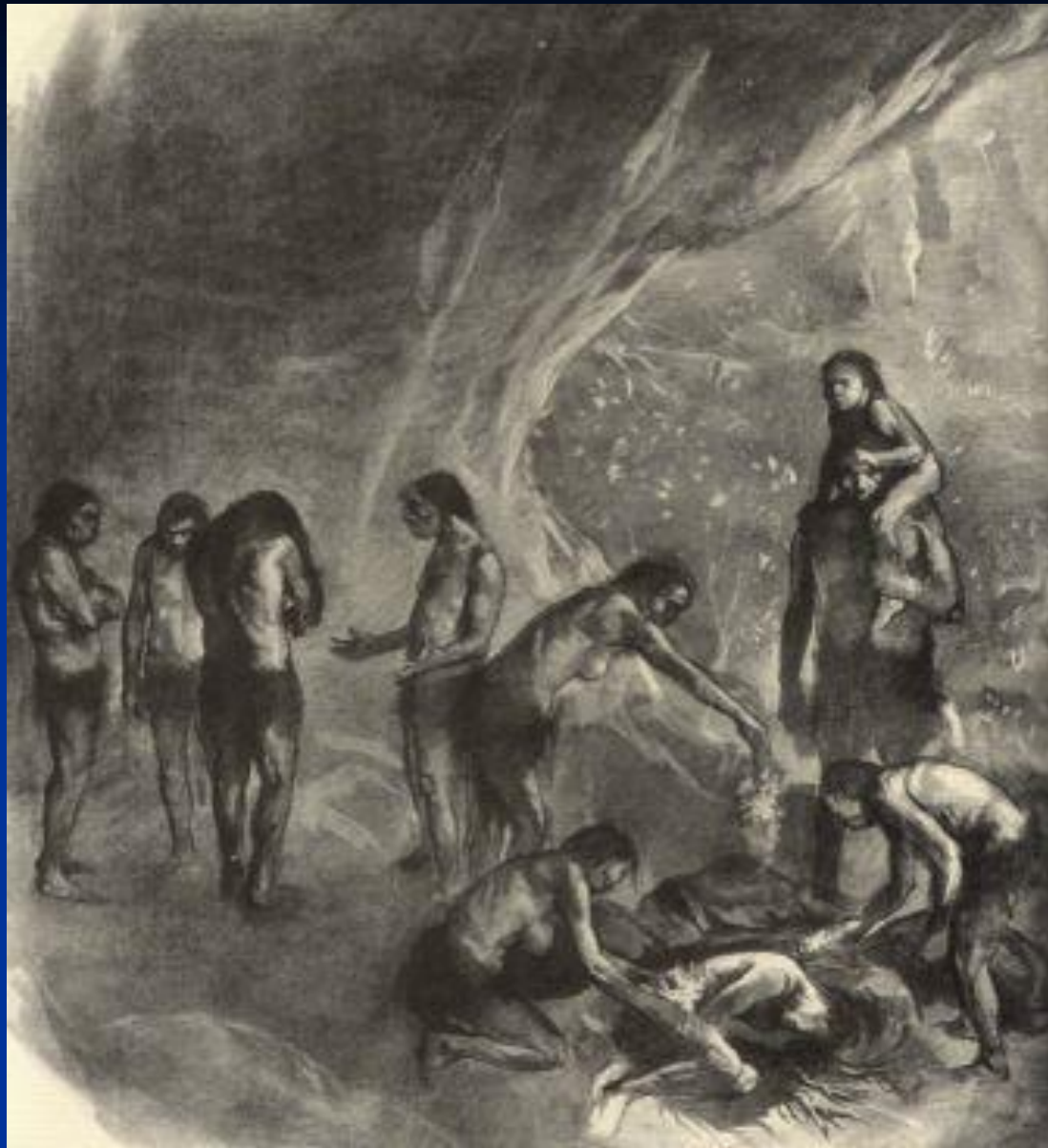
Neolithic and Bronze Age burials



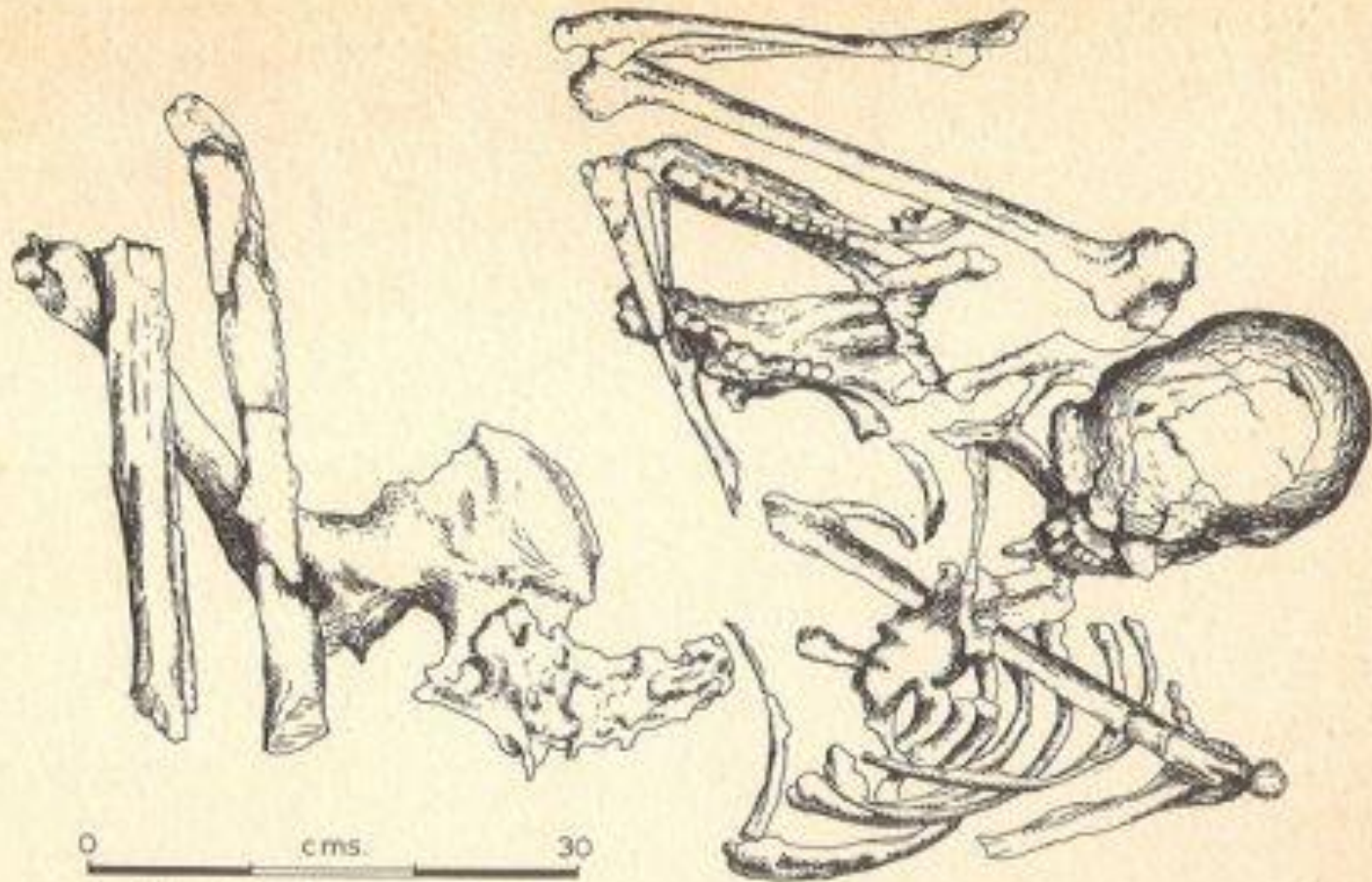
Neolithic burial at Nea Nikomedia



Paleolithic burial (buried 23,000 years ago)



Shanidar Cave burial (60,000 years ago)



22 An idea of death as a personal fate and possibly some awareness of a religious feeling first appears in Neanderthal times. The careful burial of ten individuals in a cemetery on the terrace of Mugharet-es-Skhül, Mont Carmel, shows this. Associated with one adult male burial from this site were the jawbones of a great wild boar which the skeleton is apparently clasping

**Paleolithic burial with wild boar jawbone amulet
(90,000 years ago)**

Infantile Autism

Early infancy

Myth of Death and Rebirth

Ancient Funerary Ritual

Brief Psychotic Disorder

Adolescence

Myth of Sacral Kingship

Ancient New Year's Festival

UPPER PALEOLITHIC ← → BIRTH OF CIVILIZATION

Libido Development and Cultural Evolution
Part II

The Brief Psychotic Disorder, Autism
and their Myth and Ritual Correlates

Daniel Benveniste, Ph.D.

A Carter - Jenkins Center production



The End

copyright 2008

